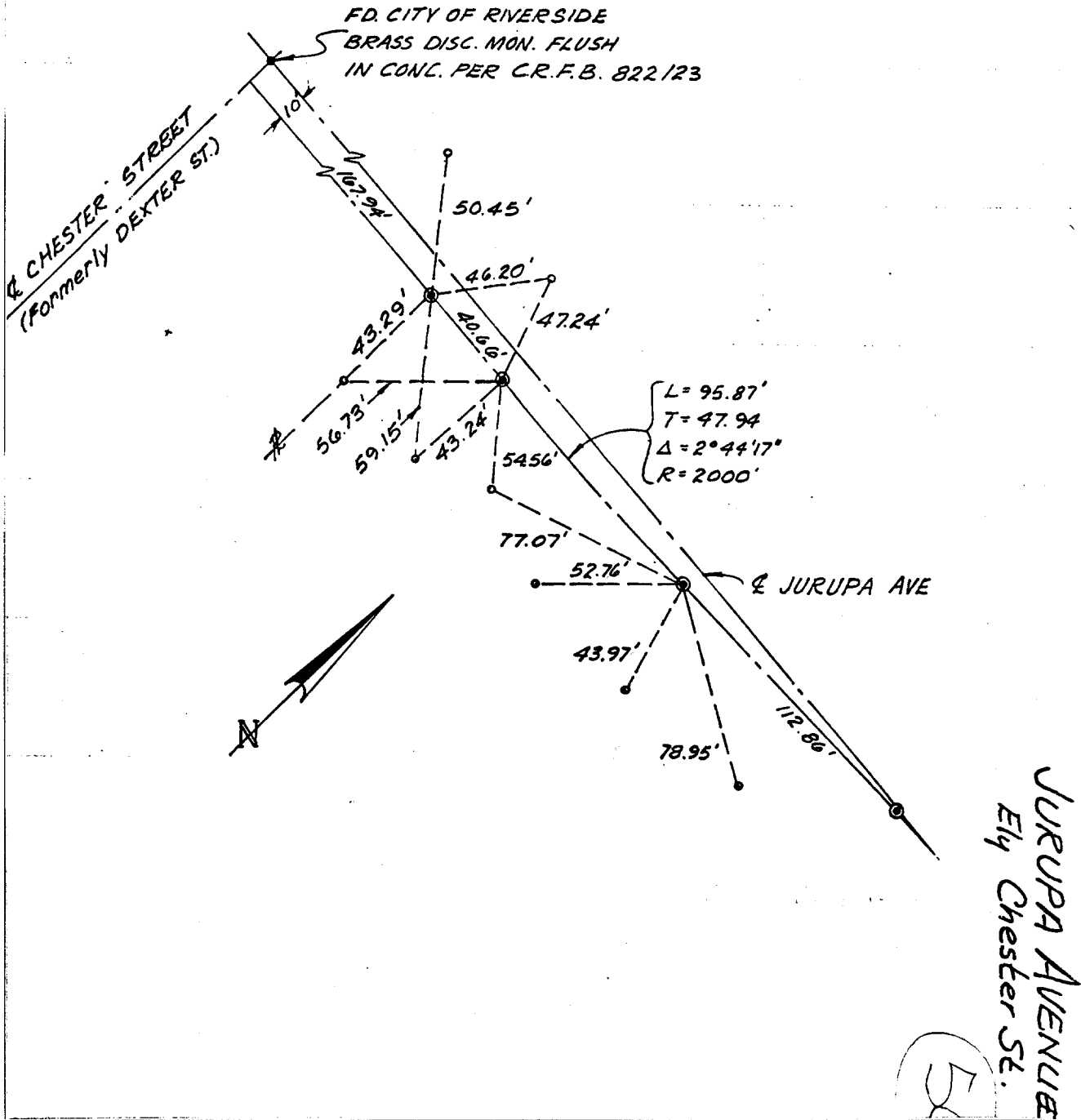


- INDICATES SET 18" COPPER CLAD STL. MON. W/1/2" BRASS CAP STAMPED R.C.E. 9503 (FLUSH)
- TIE POINTS (WIN NAILS SET IN TOP OF CURB) UNLESS OTHERWISE NOTED



Street: JURUPA AVE Ely X-Street: CHESTER ST
 OFFICIAL USE ONLY

- ✕ FD. Ramset Nail on T/C
- FD. LD. & TK. on T/C
- FD. "C" Nail on T/C
- Set LD. & TK. on T/C

Scale: 1" = 50'
 Date:
 Drawn by:
 W.O.:
 F.B.:

OFFICIAL TIE PLAT
 CITY OF RIVERSIDE

These ties are for the purpose of perpetuating the found monumentation. No claim is made as to the relationship of the points or lines shown hereon to true boundary locations.

TRACT 9662
 Sheet 1 of 1
 File No.: