

FILE NO.:  
 OF 7 SHEETS  
 SHEET 7

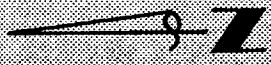
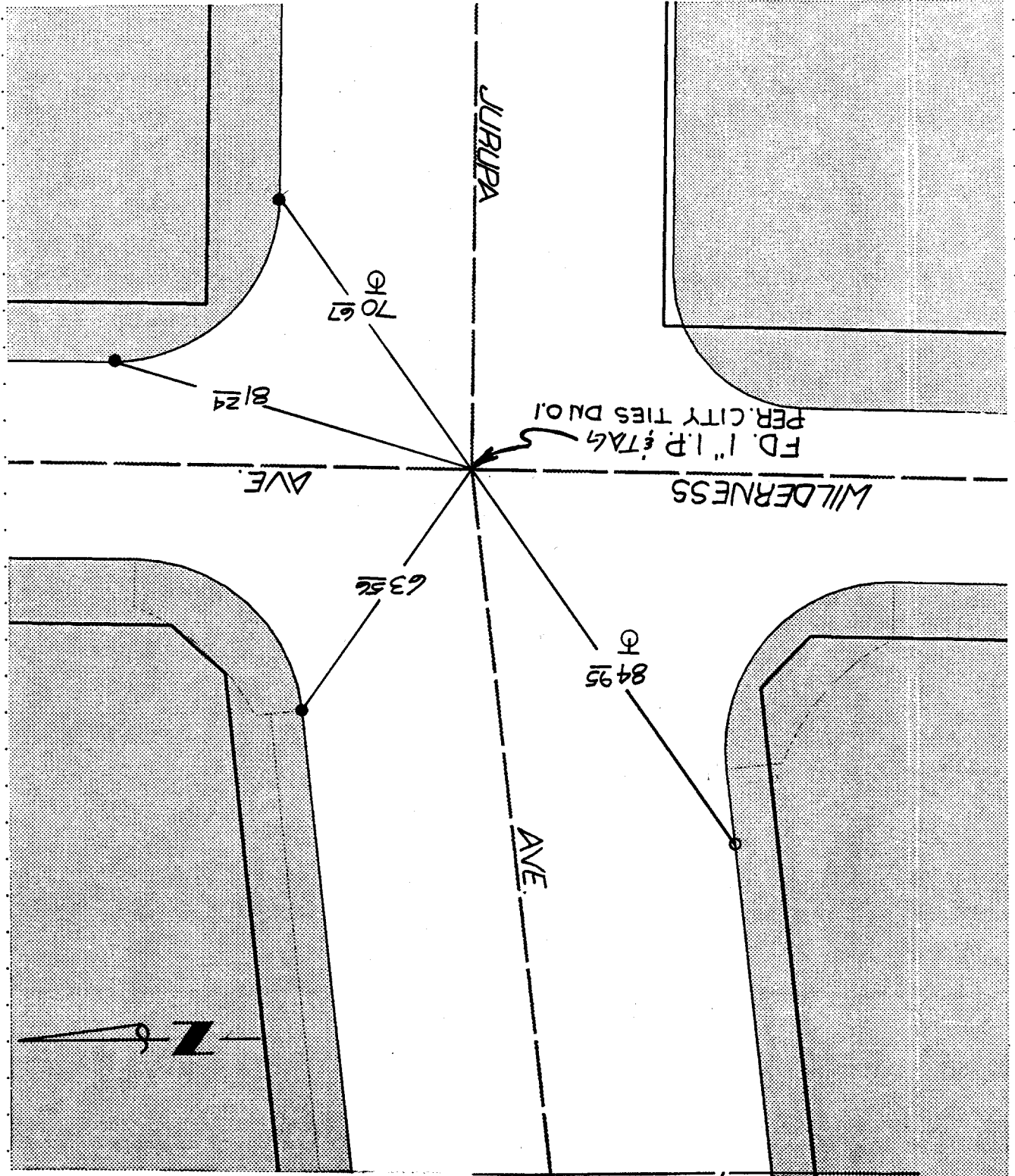
OFFICIAL TIE PLAT  
 CITY OF RIVERSIDE  
 These ties are for the purpose of perpetuating the found  
 monumentation. No claim is made as to the relationship of  
 the points or lines shown hereon to true boundary locations.

SCALE: N.T.S.  
 DATE: OCT. 30, 96  
 DR. BY: FINNEY, J  
 W.O.:  
 F.B.:

STREET JURUPA AVE.  
 X-STREET WILDERNESS AVE.  
 OFFICE USE ONLY

FILE 644

● FD. LD. & TK. on T/C  
 ○ SET LD. & TK. On T/C  
 X FD. Ramset Nail on T/C  
 ■ FD. "C" Nail on T/C



TRANSIT & SWING TIES