

STREET JURUPA AVE. X-STREET ORDWAY ST.
OFFICE USE ONLY

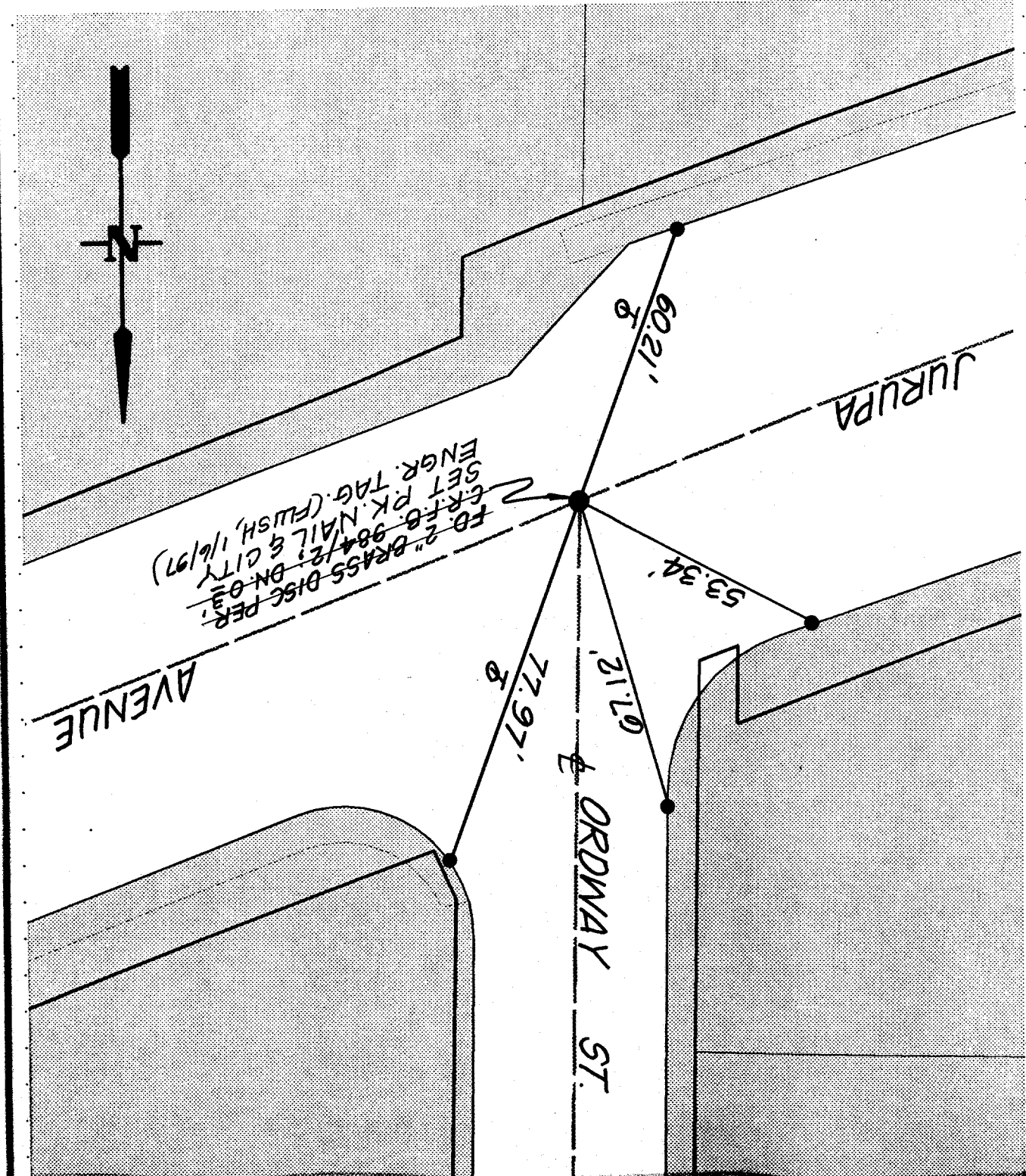
SCALE: N.T.S.
DATE: 10-30-96
DR. BY: K.ESGATE
W.O.:
F.B.:

OFFICIAL TIE PLAT
CITY OF RIVERSIDE
These ties are for the purpose of perpetuating the found
monumentation. No claim is made as to the relationship of
the points or lines shown hereon to true boundary locations.

SHEET 1
OF 1 SHEETS
FILE NO.:

● FD. LD. & TK. on T/C
○ SET LD. & TK. On T/C

FD. Ramset Nail on T/C
FD. "C" Nail on T/C
FD. 2" BRASS DISC PER
C.R.F. 0.984/2 ON-03
SET PK. NAIL & CITY
ENGR. TAG. (FLUSH, 1/6/97)



TRANSIT & SWING TIES