

72A

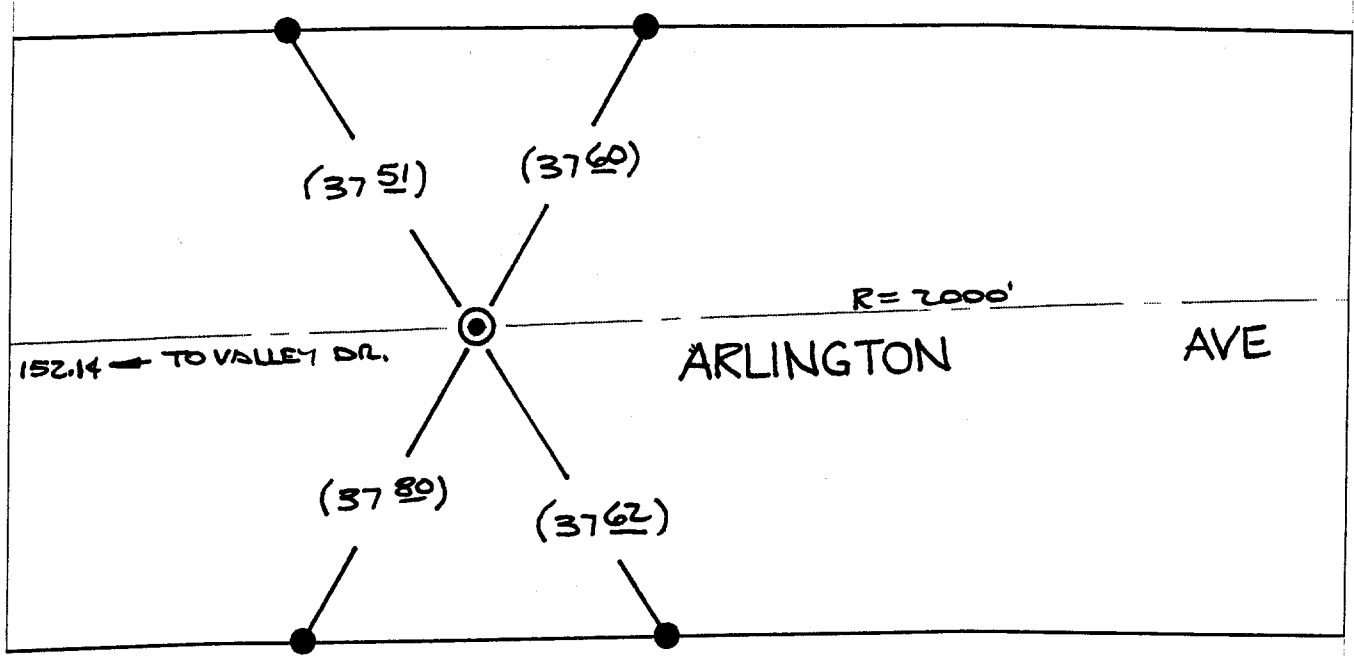
B.C. ELY VALLEY DR.

453.71/F

X-Street:  
OFFICIAL USE ONLY

\* ARLINGTON AVE.

Street:



REF. CRFS 806/17

⊙ - SET P.K. NAIL & CITY ENGR. TAG FLUSH.

- ✕ FD. Ramset Nail on T/C
- FD. "C" Nail on T/C

- FD. LD. & TK. on T/C
- Set LD. & TK. on T/C

Scale: 1" = 20'  
 Date: 07/10/98  
 Drawn by: bmark *bf*  
 W.O.:  
 F.B.:

## OFFICIAL TIE PLAT

### CITY OF RIVERSIDE

*These ties are for the purpose of perpetuating the found monumentation. No claim is made as to the relationship of the points or lines shown hereon to true boundary locations.*

Sheet 1 of 1

File No.: