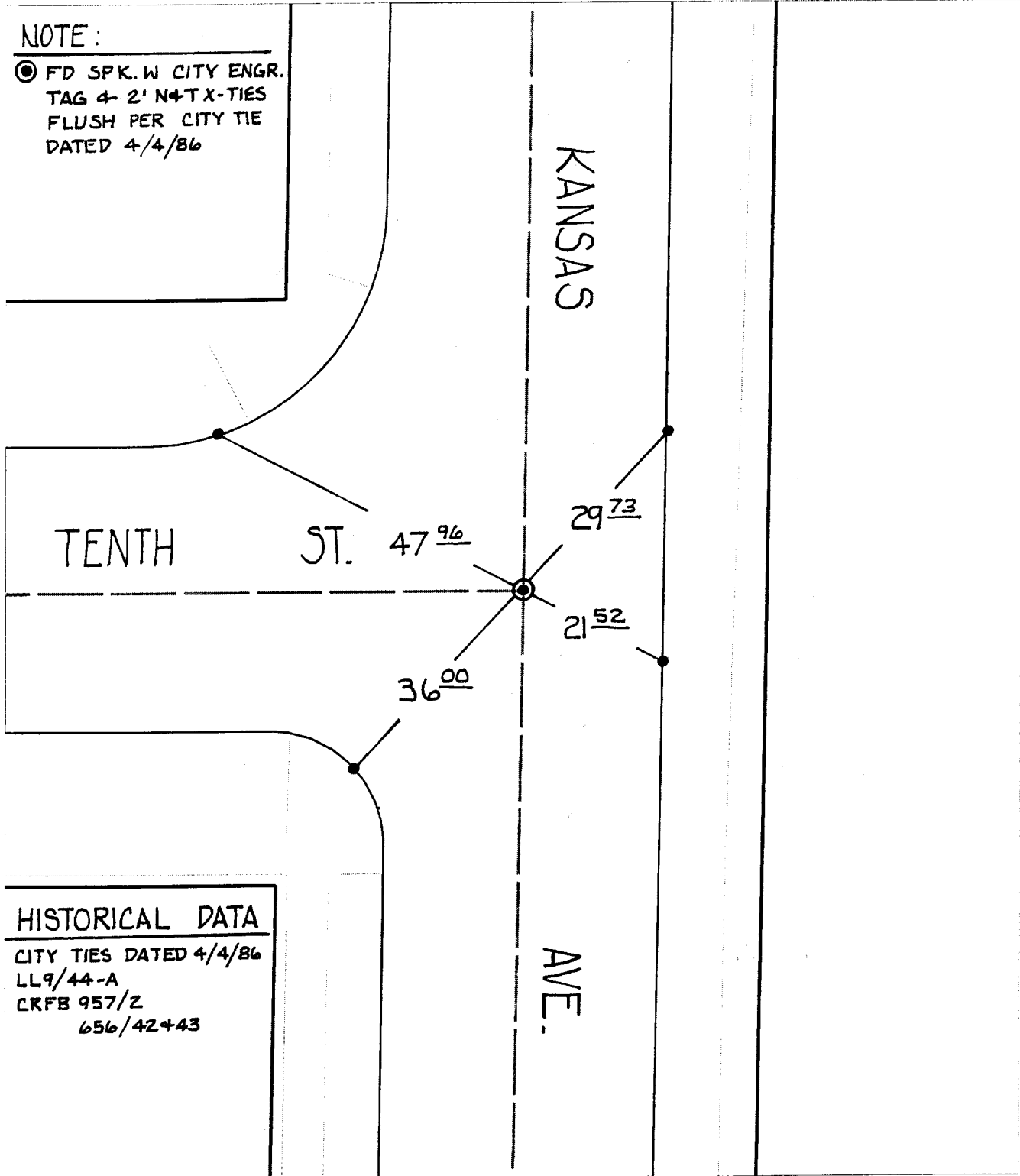


NOTE:

⊙ FD SPK. W CITY ENGR.  
TAG 4 2' N+TX-TIES  
FLUSH PER CITY TIE  
DATED 4/4/86



HISTORICAL DATA

CITY TIES DATED 4/4/86  
LL9/44-A  
CRFB 957/2  
656/42+43

⊗ FD. Ramset Nail on T/C  
■ FD. "C" Nail on T/C

● FD. LD. & TK. on T/C  
○ Set LD. & TK. on T/C

Street: KANSAS AVE.  
X-Street: TENTH ST.  
OFFICIAL USE ONLY

Scale: 1" = 20'

Date: 08/16/99

Drawn by: L. Harris

W.O.:

F.B.:

OFFICIAL TIE PLAT  
CITY OF RIVERSIDE

*These ties are for the purpose of perpetuating the found monumentation. No claim is made as to the relationship of the points or lines shown hereon to true boundary locations.*



Sheet 3 of 5

File No.:

#25