

X-Street: Ely of Victoria #78

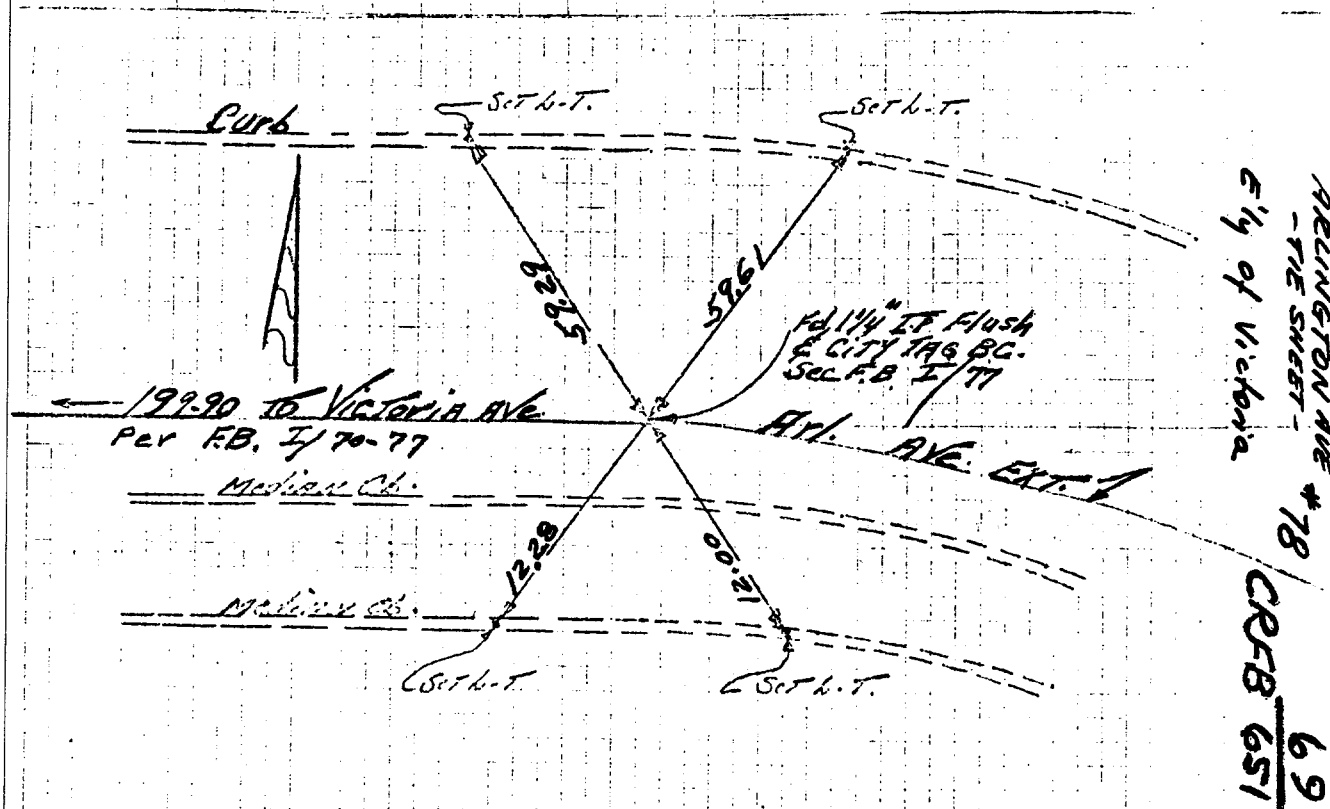
X-Street: Ely of Victoria #78

OFFICIAL USE ONLY

## TRANSIT Ties

*Historical DATA*  
*KB. I/77*

Field Party  
howry  
Thorp  
FB. 651/69  
3-20-68



✕ FD. Ramset Nail on T/C  
 ■ FD. "C" Nail on T/C

● FD. LD. & TK. on T/C  
○ Set LD. & TK. on T/C

**Scale:**

Date:

**Drawn by:**

**W.O.:**

**F.B.:**

**OFFICIAL TIE PLAT**  
**CITY OF RIVERSIDE**

*These ties are for the purpose of perpetuating the found monumentation. No claim is made as to the relationship of the points or lines shown hereon to true boundary locations.*

Sheet 1 of 1

File No.: