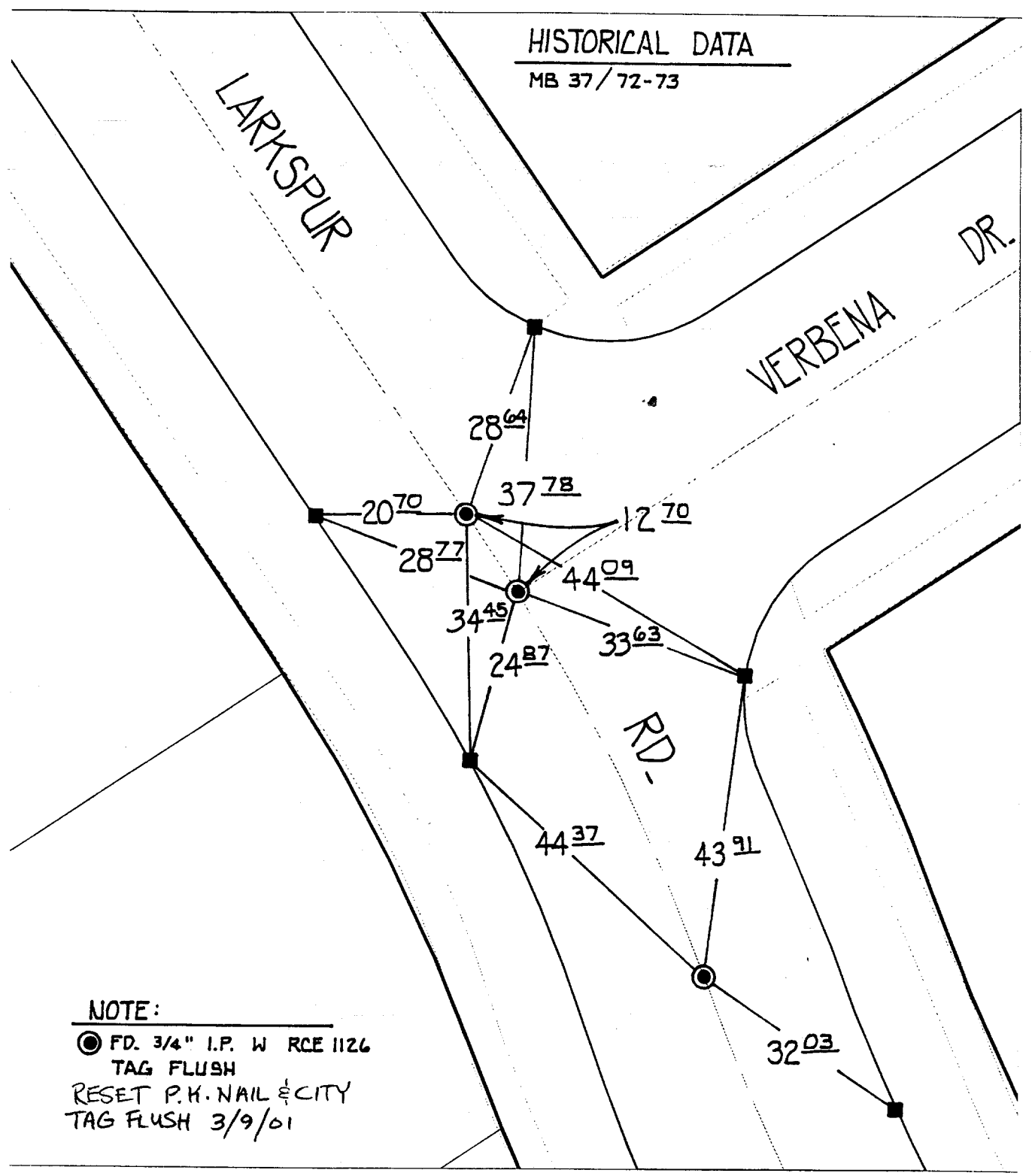


Street: LARKSPUR RD.

OFFICIAL USE ONLY

X-Street: VERBENA DR.

HISTORICAL DATA
MB 37/72-73



NOTE:
 ● FD. 3/4" I.P. W RCE 1126
 TAG FLUSH
 RESET P.H. NAIL & CITY
 TAG FLUSH 3/9/01

- ✕ FD. Ramset Nail on T/C
- FD. LD. & TK. on T/C
- FD. "C" Nail on T/C
- Set LD. & TK. on T/C

Scale: 1" = 20'
 Date: 08/23/99
 Drawn by: L. Harris
 W.O.:
 F.B.:

OFFICIAL TIE PLAT
CITY OF RIVERSIDE

These ties are for the purpose of perpetuating the found monumentation. No claim is made as to the relationship of the points or lines shown hereon to true boundary locations.



Sheet 2 of 4
 File No.: