

463.71F

Ar. Ave. EXT.
B.C. NEAR HAWARDEN DR.

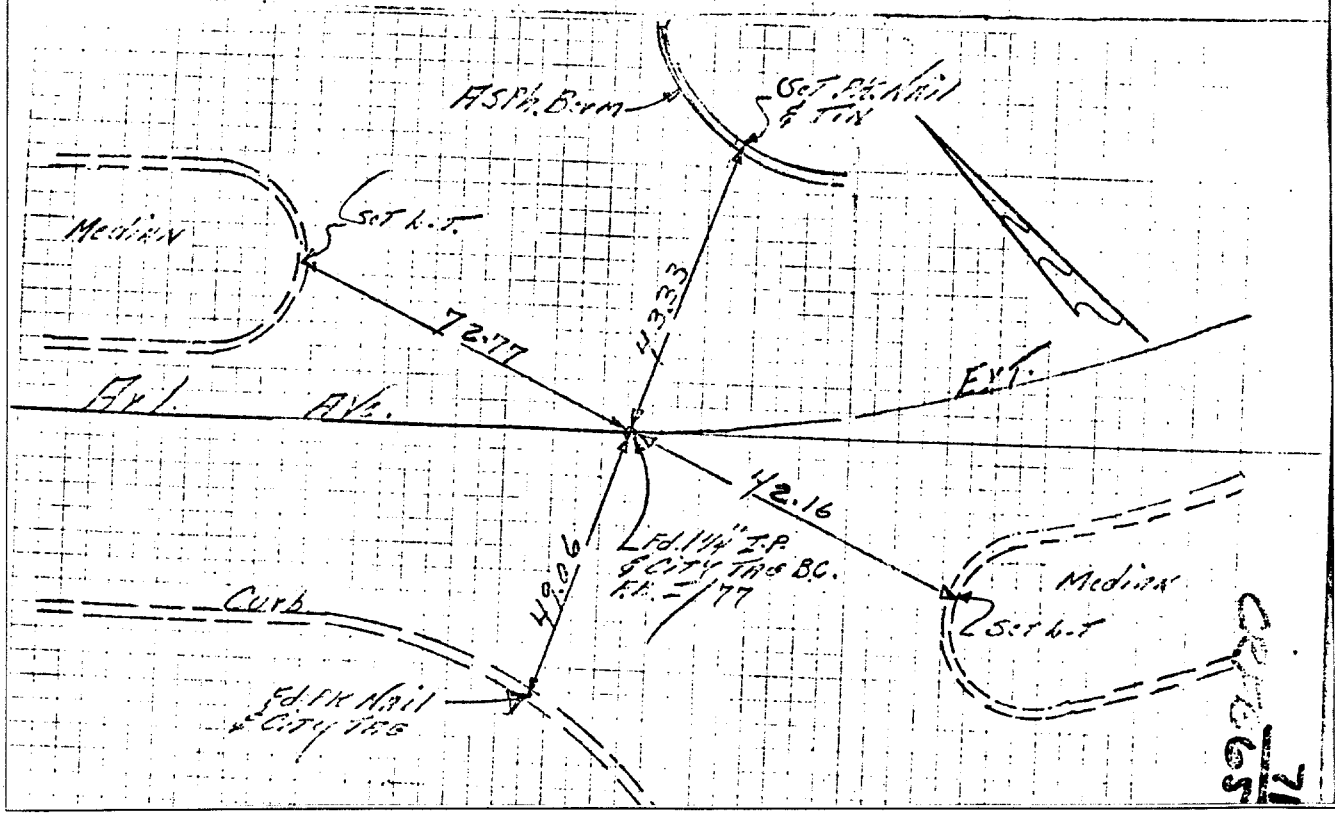
Street: Arllington Ave

X-Street: BC Near Haywarden #
OFFICIAL USE ONLY
796

Historical DATA
F.B.I./77

Field PARTY
Lowry
Thorp
FB 651/71
3-20-68

TRANSIT TIES



- ✗ FD. Ramset Nail on T/C
- FD. "C" Nail on T/C

- FD. LD. & TK. on T/C
- Set LD. & TK. on T/C

Scale:
Date:
Drawn by:
W.O.:
F.B.:

OFFICIAL TIE PLAT

CITY OF RIVERSIDE

These ties are for the purpose of perpetuating the found monumentation. No claim is made as to the relationship of the points or lines shown hereon to true boundary locations.

Sheet 1 of 1
File No.: