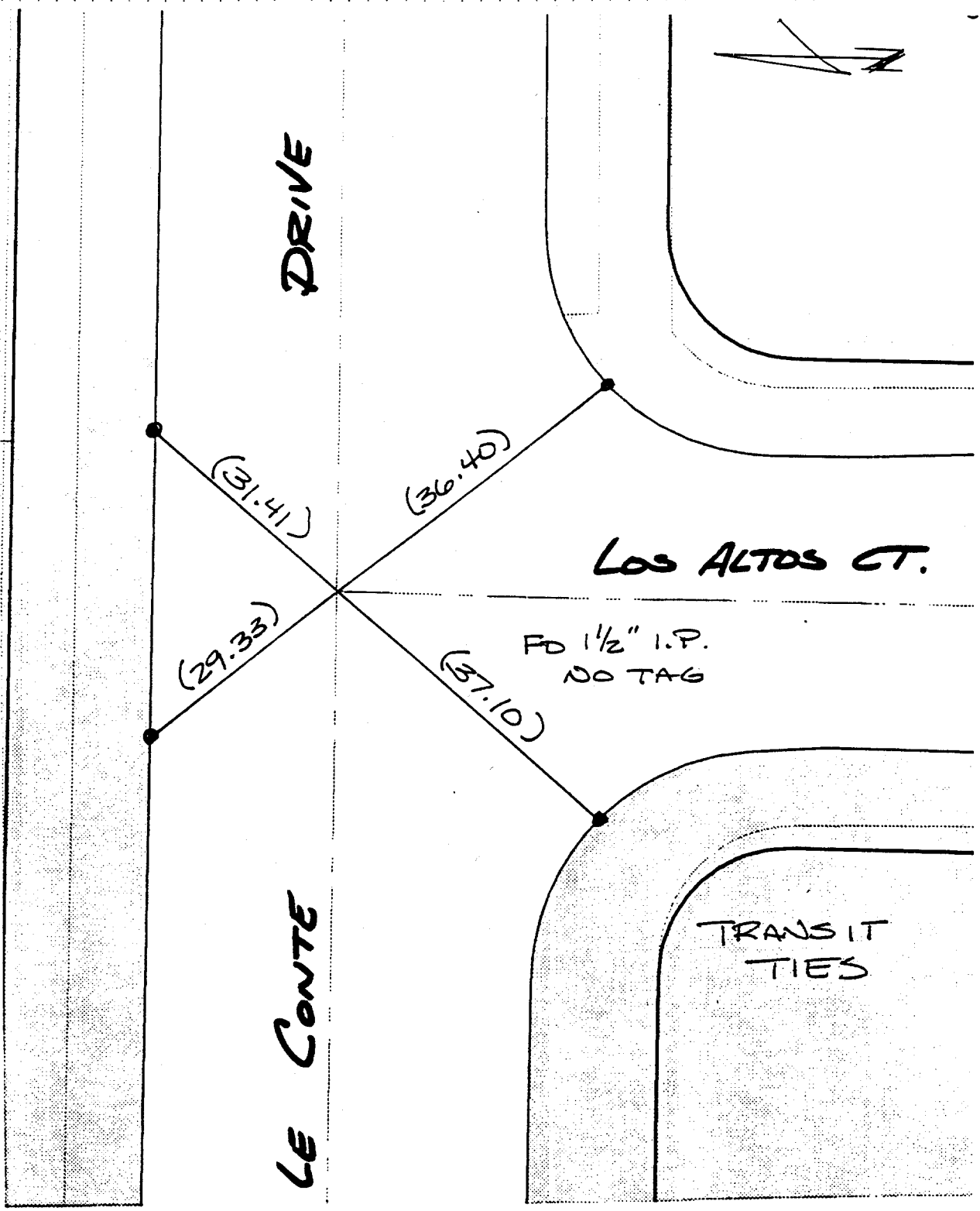


Actual photos in Riverside make certain of the location of the plat.

STREET LE CONTE DR. X-STREET LOS ALTOS CT.

OFFICE USE ONLY



- × FD. Ramset Nail on T/C
- FD. LD. & TK. on T/C
- FD. "C" Nail on T/C
- SET LD. & TK. On T/C

los aptos and le conte

SCALE:
DATE:
DR. BY:
W.O.:
F.B.:

OFFICIAL TIE PLAT
CITY OF RIVERSIDE

These ties are for the purpose of perpetuating the found monumentation. No claim is made as to the relationship of the points or lines shown hereon to true boundary locations.

SHEET	
OF	SHEETS
FILE NO.:	