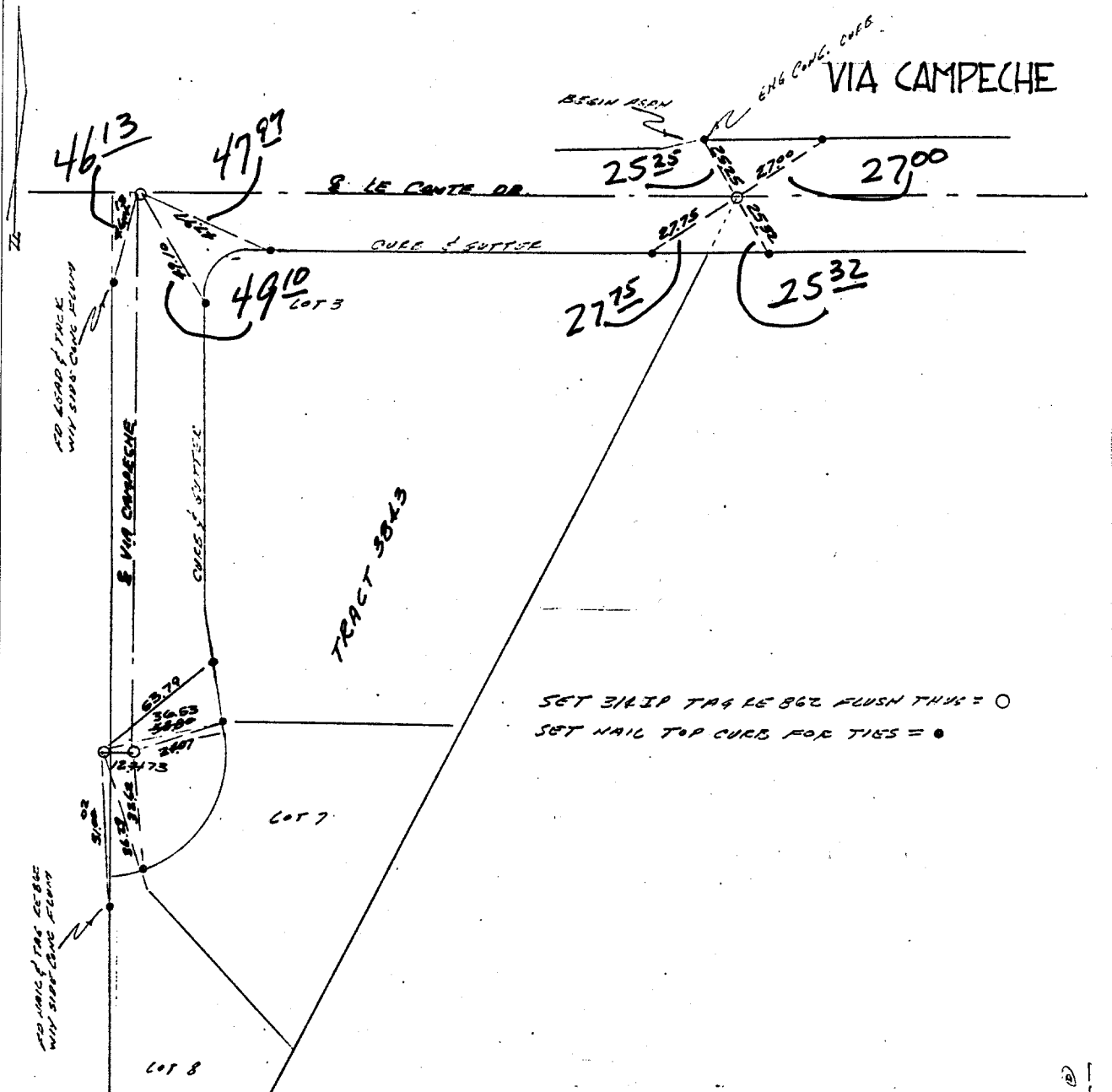


J. F. DAVIDSON ASSOCIATES
 CIVIL ENGINEERS • SURVEYORS • PLANNERS

1022/19

F.B.

SURVEY OF CENTER LINE MONUMENTS & TIES (PORT. NW 1/4 NE 1/4 SEC. 9) T25.R4W.S881M
 FOR CAL-FED TRACT 3843 W.O.No. 5009 DATE JAN 25 1970
 SURVEY PARTY ELLIS SPONT PLANE REF. _____ A.M. _____



SET 3/4" IP TAG RE 862 FLUSH THICK = ○
 SET NAIL TOP CURB FOR TIES = ●

- ✕ FD. Ramset Nail on T/C
- FD. LD. & TK. on T/C
- FD. "C" Nail on T/C
- Set LD. & TK. on T/C

Street: E Le Conte Dr

OFFICIAL USE ONLY
 X-Street: Via Campeche

Scale: _____
 Date: _____
 Drawn by: _____
 W.O.: _____
 F.B.: _____

OFFICIAL TIE PLAT

CITY OF RIVERSIDE

These ties are for the purpose of perpetuating the found monumentation. No claim is made as to the relationship of the points or lines shown hereon to true boundary locations.

Sheet 1 of 1
 File No.: _____