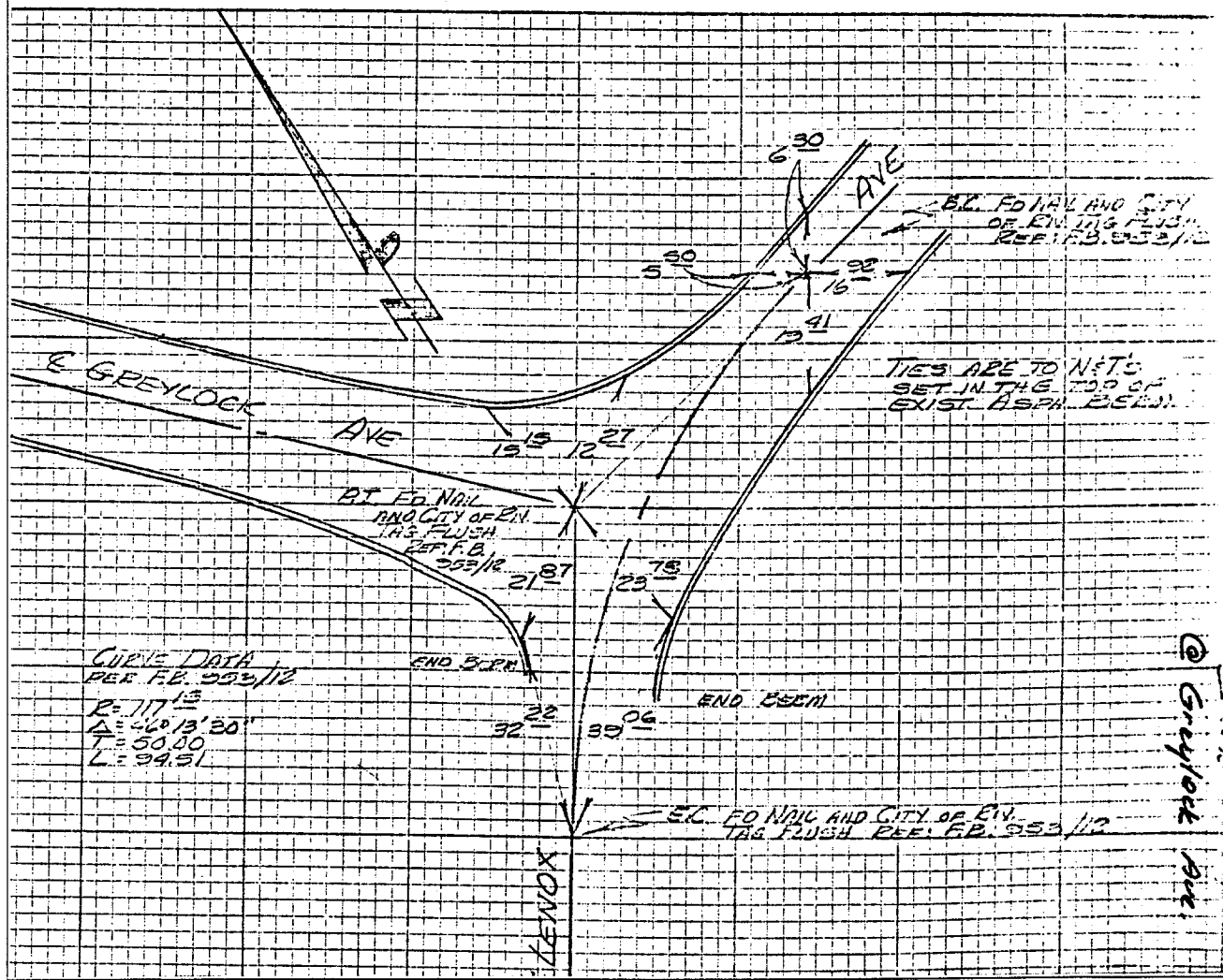


Street: LENOX AVE  
 X-Street: GREYLOCK AVE

OFFICIAL USE ONLY

|   |              |               |
|---|--------------|---------------|
| HISTORICAL DATA<br>PER F.B. 953/12<br>FB 953/12 | TRANSIT TIES | OPEN          |
|   | AND          | FRYE          |
|   | SWING TIES   | 21535U        |
|   |              | JUNE 23, 1972 |
|   |              | F.B. 944/66   |



- ✕ FD. Ramset Nail on T/C
- FD. LD. & TK. on T/C
- FD. "C" Nail on T/C
- Set LD. & TK. on T/C

Scale:  
 Date:  
 Drawn by:  
 W.O.:  
 F.B.:

## OFFICIAL TIE PLAT

### CITY OF RIVERSIDE

*These ties are for the purpose of perpetuating the found monumentation. No claim is made as to the relationship of the points or lines shown hereon to true boundary locations.*

Sheet 1 of 1  
 File No.: