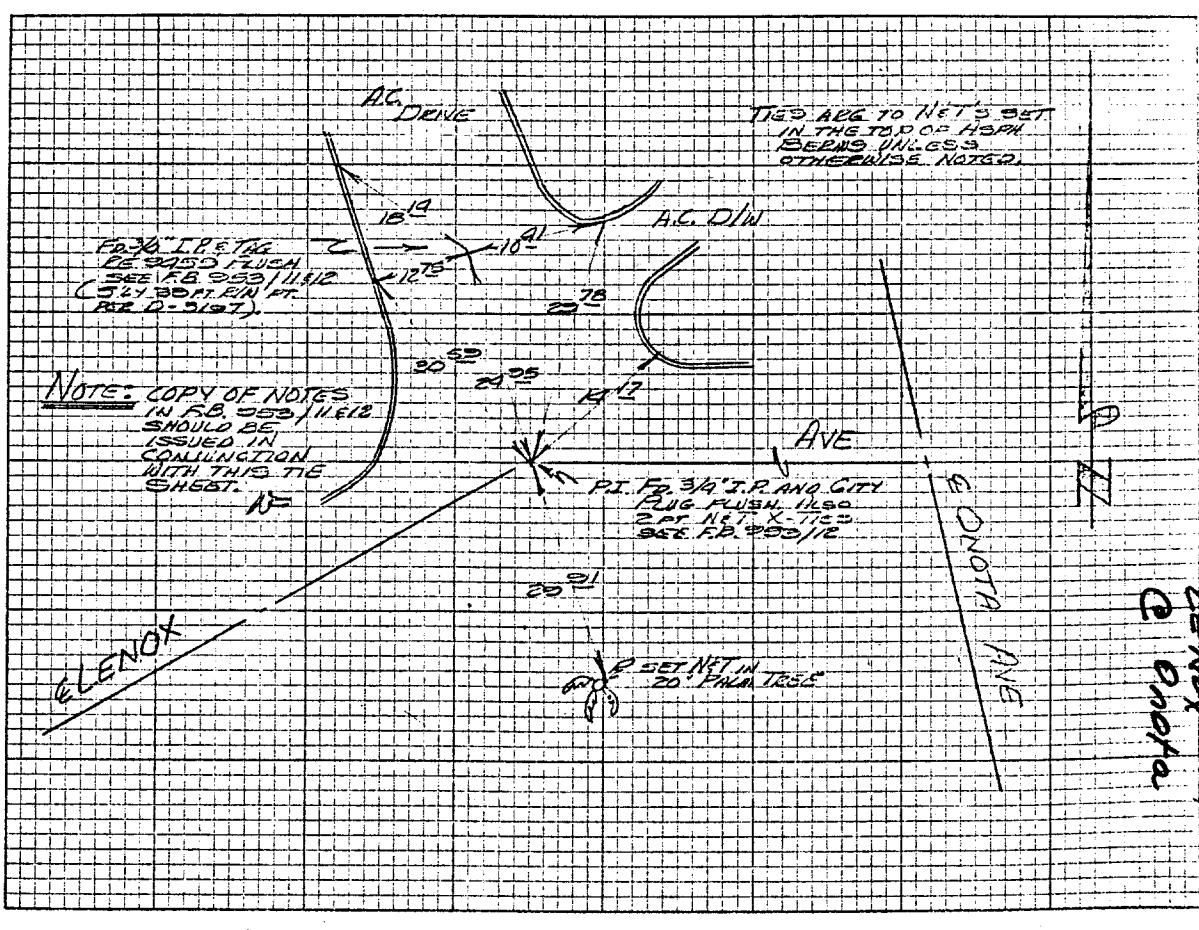


Street: LENOX AVE
 X-Street: ONOTA AVE

OFFICIAL USE ONLY

HISTORICAL DATA F.B. 323/12		SWING TIES	LENOX AVE AT P.I. WLY OF ONOTA AVE	
			CREW FRYC RUSSELL	
			JUNE 28, 1972 F.B. 344/65	



- ✕ FD. Ramset Nail on T/C
- FD. LD. & TK. on T/C
- FD. "C" Nail on T/C
- Set LD. & TK. on T/C

OFFICIAL TIE PLAT

CITY OF RIVERSIDE

These ties are for the purpose of perpetuating the found monumentation. No claim is made as to the relationship of the points or lines shown hereon to true boundary locations.

Scale:
 Date:
 Drawn by:
 W.O.:
 F.B.:

Sheet 1 of 1
 File No.: