

A.A.WEBB
PARCEL MAP NO. 63
BOOK 5/40

SWING TIES

LESTER F.
CULDE SAC
COPY

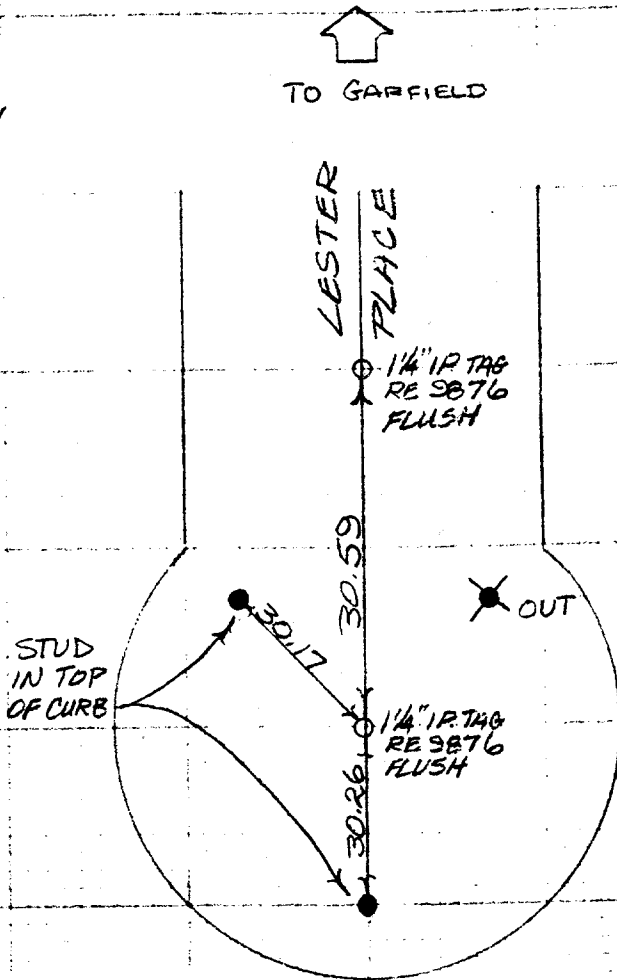
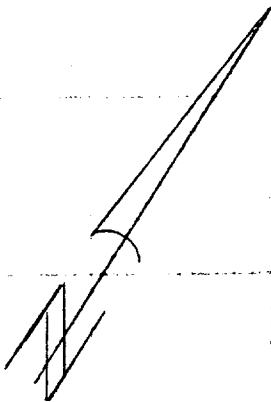
FIELD CHECKED
2/76 JHT

Street: LESTER PL.

X-Street: Culde Sac

OFFICIAL USE ONLY

↑
TO GARFIELD



✕ FD. Ramset Nail on T/C
 ■ FD. "C" Nail on T/C

● FD. LD. & TK. on T/C
 ○ Set LD. & TK. on T/C

Scale:
 Date:
 Drawn by:
 W.O.:
 F.B.:

OFFICIAL TIE PLAT
CITY OF RIVERSIDE

These ties are for the purpose of perpetuating the found monumentation. No claim is made as to the relationship of the points or lines shown hereon to true boundary locations.

Sheet 1 of 1
 File No.: