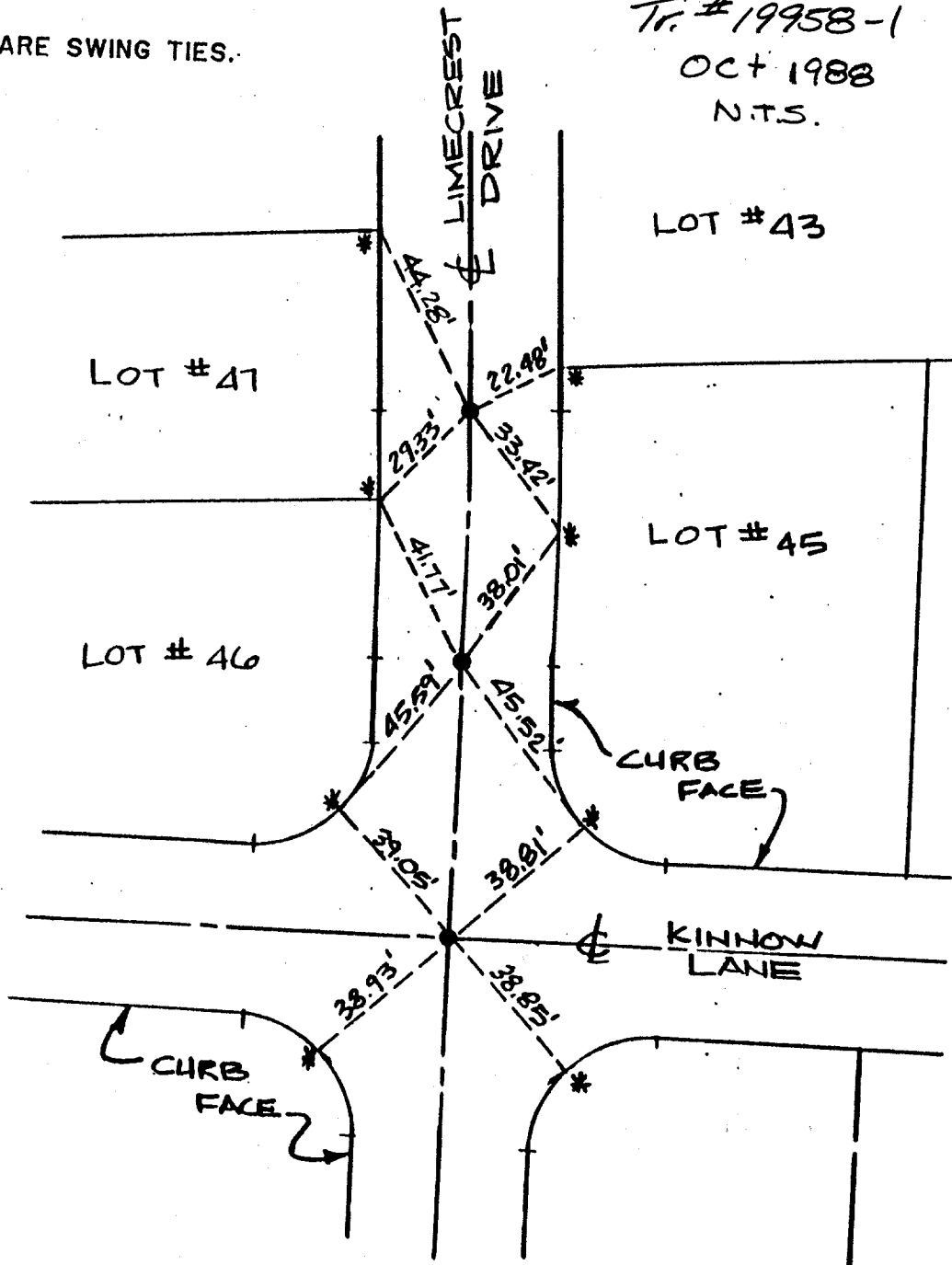


NOTE :
ALL TIES ARE SWING TIES.

Tr. #19958-1
OCT 1988
N.T.S.



- * SET RAMSET NAIL IN CURB
- SET 1" IRON PIPE, TAGGED LS 5306

- ✕ FD. Ramset Nail on T/C
- FD. LD. & TK. on T/C
- FD. "C" Nail on T/C
- Set LD. & TK. on T/C

Street: Limecrest Dr
X-Street: N of Kinnow Ln.
OFFICIAL USE ONLY

Scale:
Date:
Drawn by:
W.O.:
F.B.:

OFFICIAL TIE PLAT
CITY OF RIVERSIDE

These ties are for the purpose of perpetuating the found monumentation. No claim is made as to the relationship of the points or lines shown hereon to true boundary locations.

Sheet 1 of 1
File No.: