

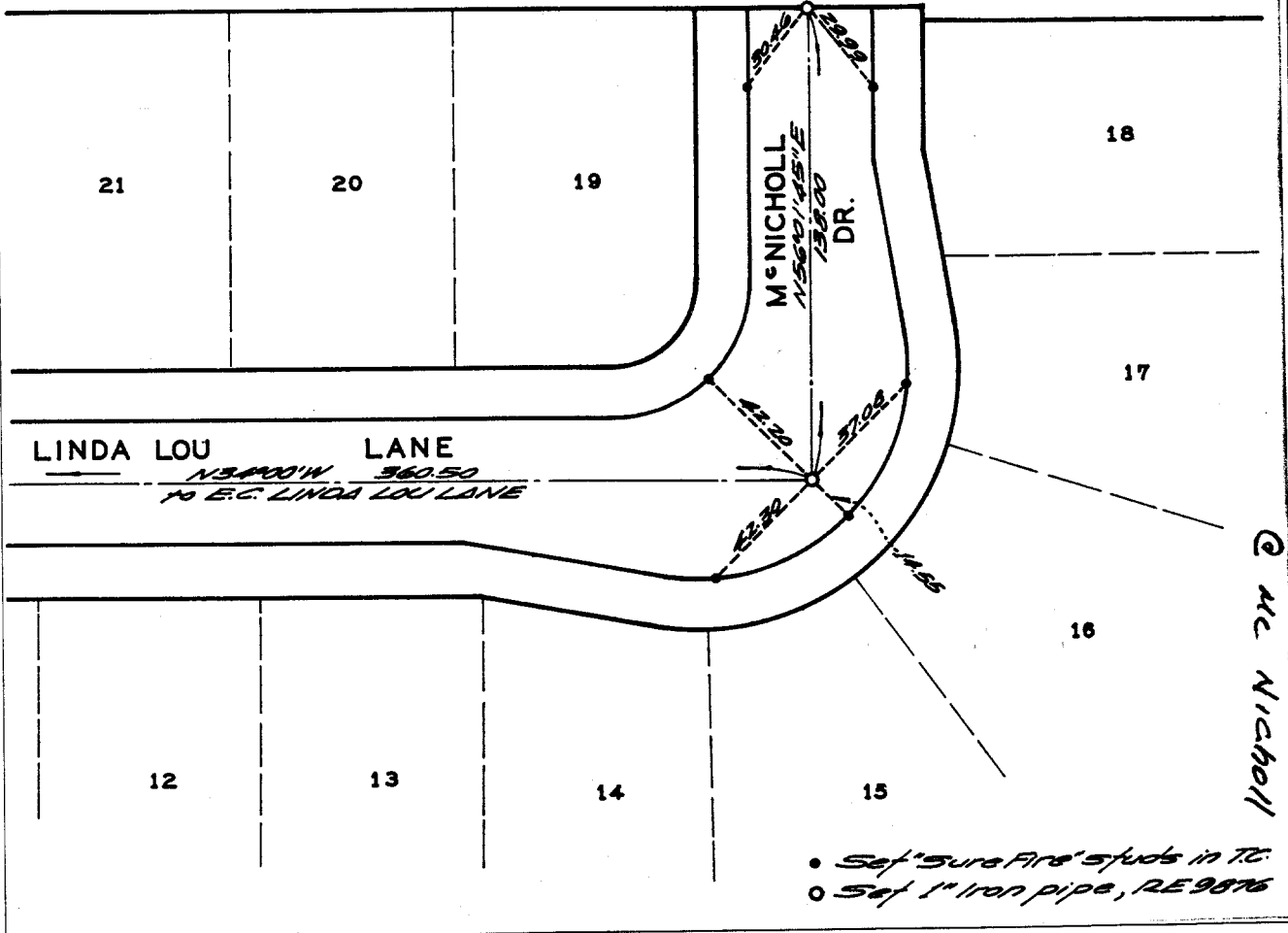
TRACT No. 3739

Being a subdivision of a portion of Lots 12 & 5, Block 29 of R.L. & I. Co. per M.B. 1/70 Records of San Bernardino County, California.

Linda Lou La
 &
 Mc NICHOLL



Scale: 1"=50'



Street: LINDA LOU LANE

OFFICIAL USE ONLY X-Street:

Mc Nicholl

- ✕ FD. Ramset Nail on T/C
- FD. "C" Nail on T/C

- FD. LD. & TK. on T/C
- Set LD. & TK. on T/C

Scale:
 Date:
 Drawn by:
 W.O.:
 F.B.:

OFFICIAL TIE PLAT
CITY OF RIVERSIDE

These ties are for the purpose of perpetuating the found monumentation. No claim is made as to the relationship of the points or lines shown hereon to true boundary locations.

Sheet 1 of 1
 File No.: