

TRANSIT TIES

NOTE:

- ⊗ NOTHING FD. @ SURFACE
- ( ) REC. DIST. PER. CITY TIES
- ⊙ RESET W/PK. NAIL & CITY ENGR. TAG FLUSH

HISTORICAL DATA

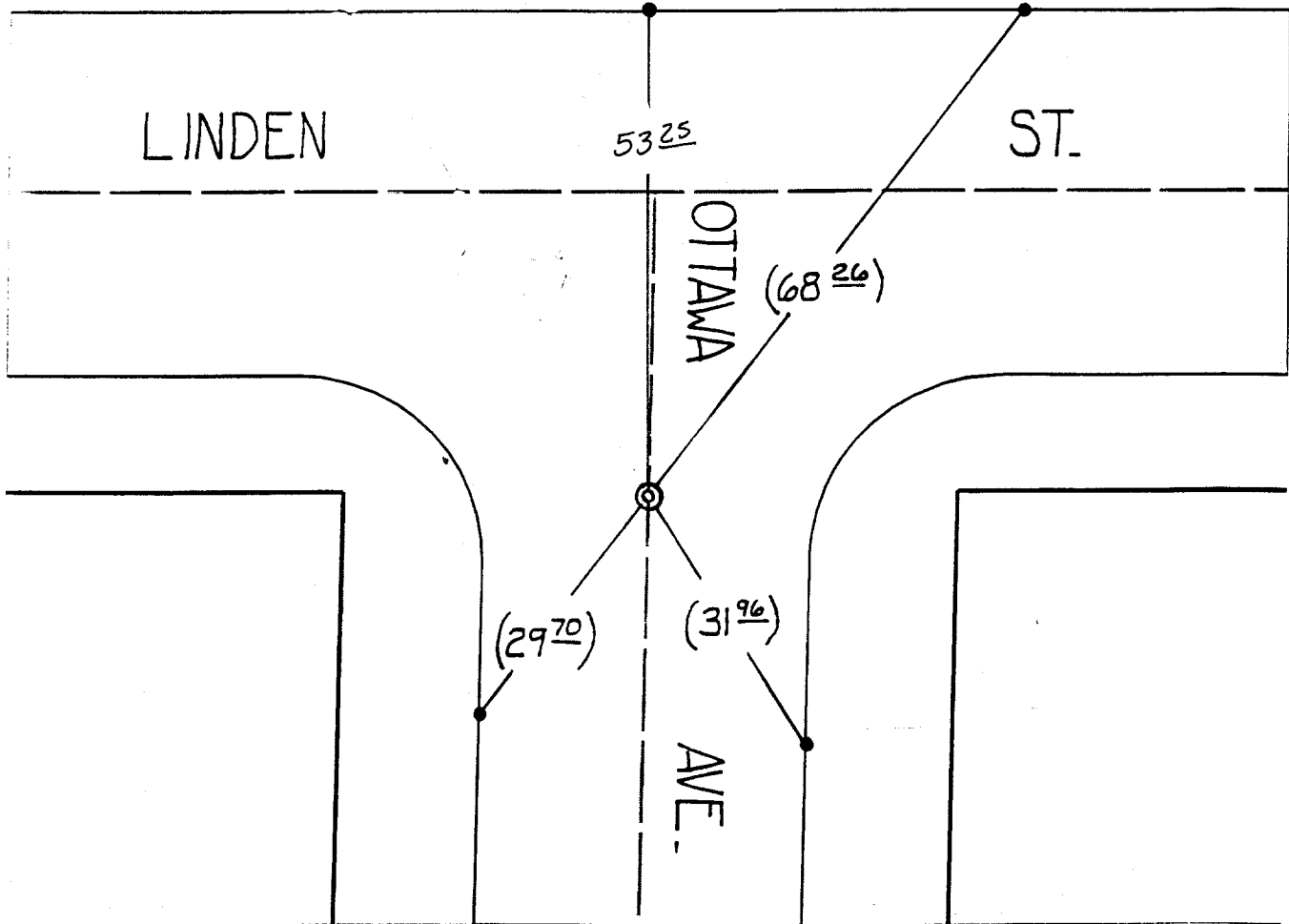
Street:

OTTAWA AVE.

OFFICIAL USE ONLY

X-Street:

LINDEN ST.



- ⊗ FD. Ramset Nail on T/C
- FD. "C" Nail on T/C

- FD. LD. & TK. on T/C
- Set LD. & TK. on T/C

Scale: 1" = 20'

Date: 12/03/99

Drawn by: survey

W.O.:

F.B.:

**OFFICIAL TIE PLAT**  
**CITY OF RIVERSIDE**

*These ties are for the purpose of perpetuating the found monumentation. No claim is made as to the relationship of the points or lines shown hereon to true boundary locations.*



Sheet 1 of 1

File No.: