

# SWING TIES

4691. TIF

NOTE:

SET P.K. & CITY TAG  
PER. CRFB 1038/5

HISTORICAL DATA

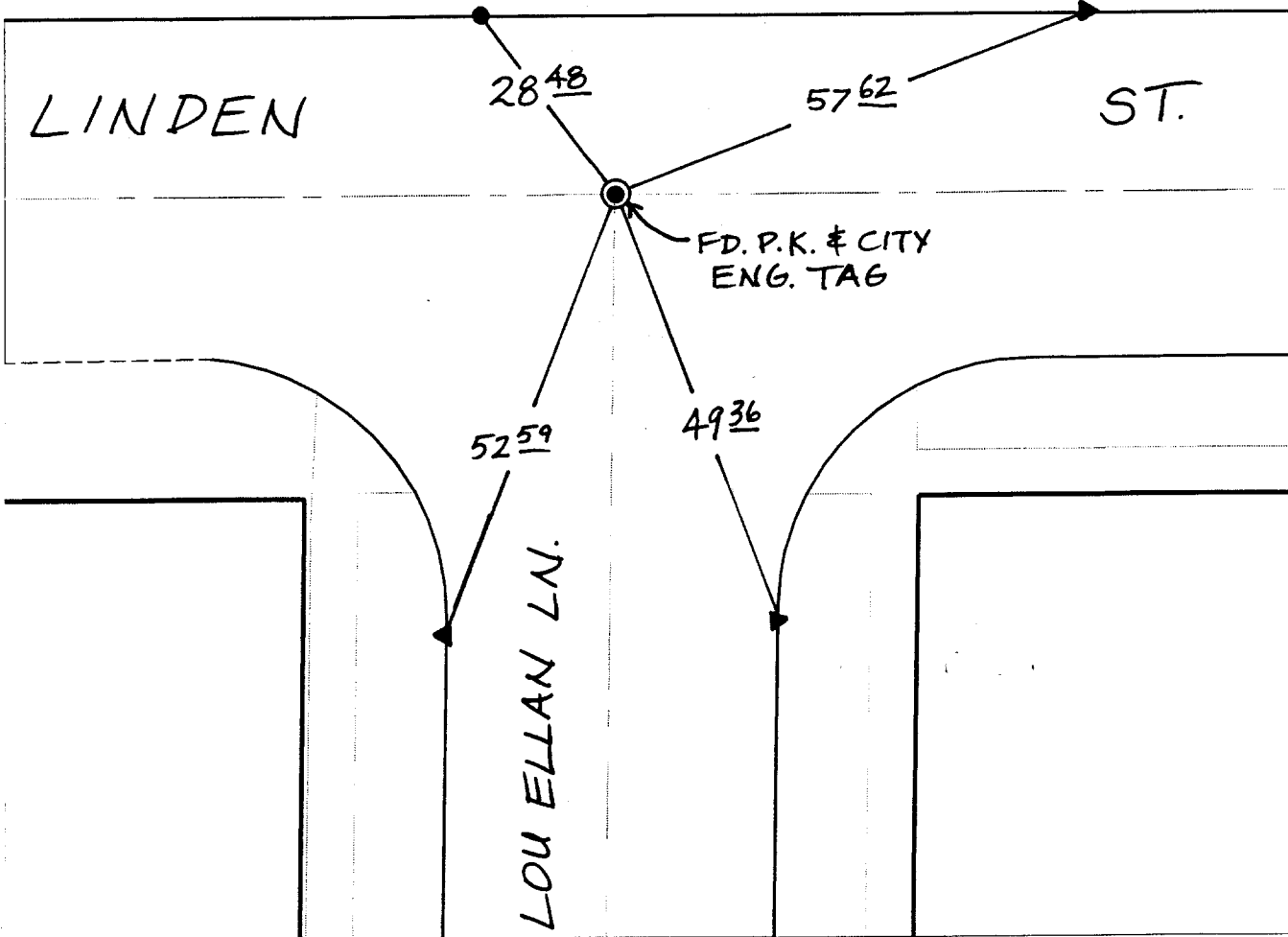
FB 1038/4  
MB 31/62  
FB 705/34  
R/S 22/61  
R/S 32/25

Street:

LINDEN STREET

OFFICIAL USE ONLY  
X-Street:

LOU ELLAN LANE



- ✕ FD. Ramset Nail on T/C    ● FD. LD. & TK. on T/C
- FD. "C" Nail on T/C    ○ Set LD. & TK. on T/C

P.K. and City Engineer tag to be set @ surface after street construction is complete. (If possible)

Scale: 1" = 20'  
Date: 06/14/00  
Drawn by: SURVEY  
W.O.:  
F.B.:

## OFFICIAL TIE PLAT CITY OF RIVERSIDE

*These ties are for the purpose of perpetuating the found monumentation. No claim is made as to the relationship of the points or lines shown hereon to true boundary locations.*



Sheet 1 of 1

File No.: