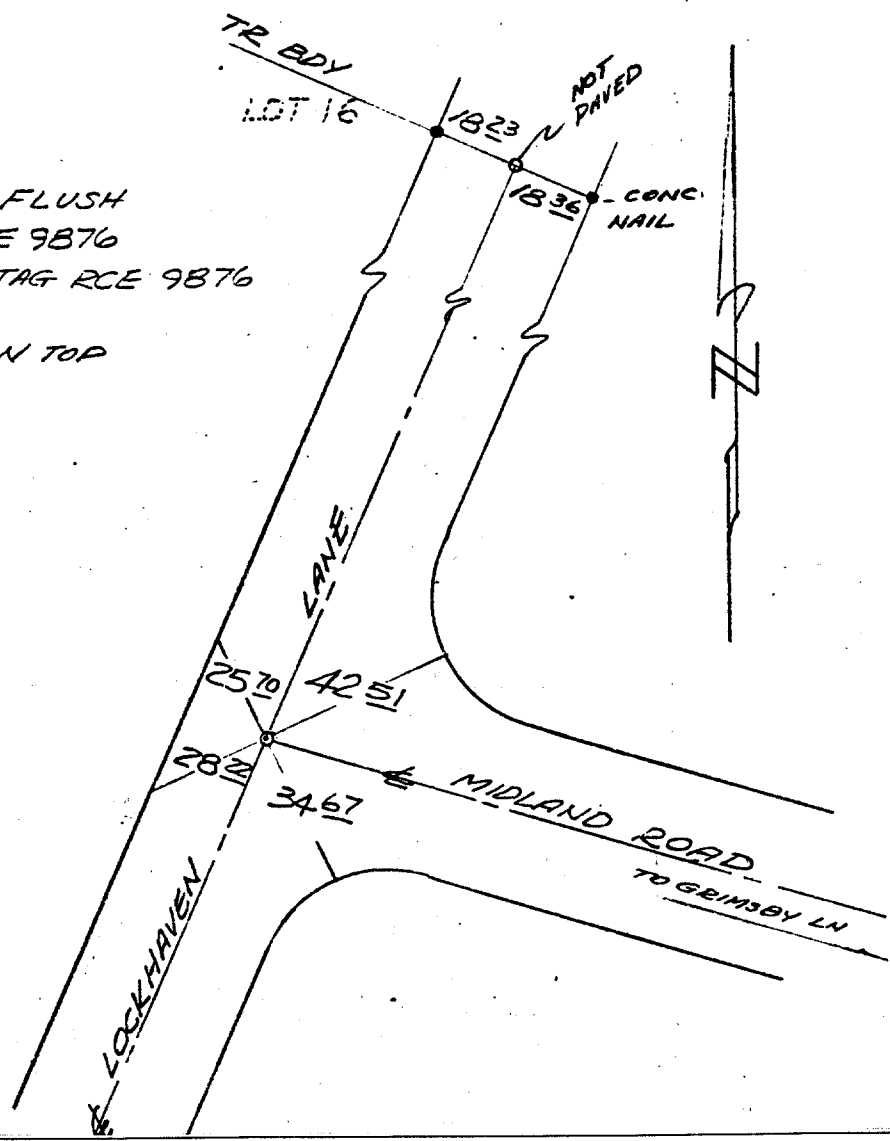


HISTORICAL DATA
 A.A. WEBB
 FB 1032/190
 TRACT 5677-2

TRANSIT TIES
 MB 84/76-78

CREW
 AGUILERA
 EVANS
 DUNHAM
 12-2-76

- = SET 1" I.P. - FLUSH TAGGED RCE 9876
- = SET STUD & TAG RCE 9876 IN CURB
- X = SET STUD IN TOP OF CURB



- ✕ FD. Ramset Nail on T/C
- FD. "C" Nail on T/C
- FD. LD. & TK. on T/C
- Set LD. & TK. on T/C

Street: LOCKHAVEN LN
 X-Street: MIDLAND Rd & TR BODY
 OFFICIAL USE ONLY

Scale: _____
 Date: _____
 Drawn by: _____
 W.O.: _____
 F.B.: _____

OFFICIAL TIE PLAT
CITY OF RIVERSIDE

These ties are for the purpose of perpetuating the found monumentation. No claim is made as to the relationship of the points or lines shown hereon to true boundary locations.

Sheet 1 of 1
 File No.: _____