

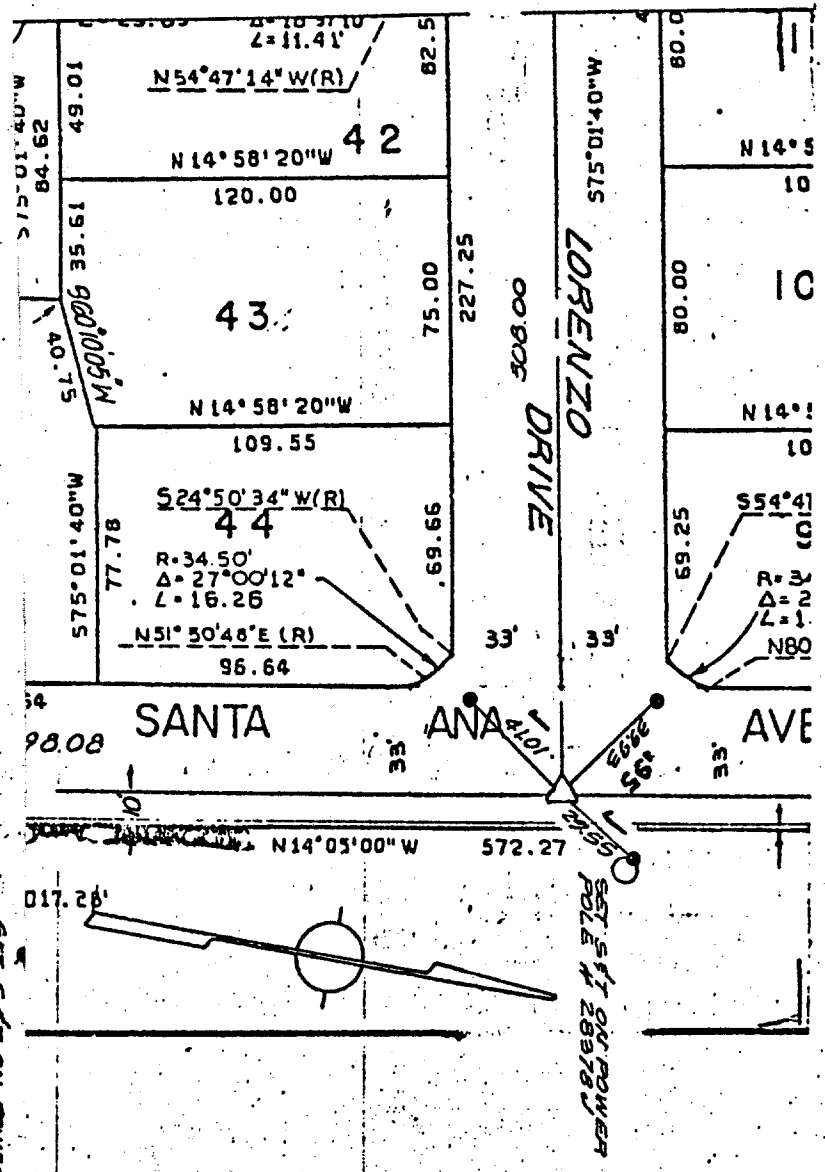
Street: LORENZO DR. X-Street: SANTA ANA AVE
 OFFICIAL USE ONLY

F. DAVIDSON ASSOCIATES
 3426 TENTH STREET
 RIVERSIDE, CALIFORNIA

MONUMENT TIES
 FOR TRACT 8665

SHEET NO. 4 OF 6
 DATE MAY 1978
 SCALE 1" = 60'

- △ Indicates (1/2" Brass Cap Stamped R.C.E. 862).
- Indicates Found Monument as noted.
- ⊗ Indicates Set Nail & Topped R.C.E. 862 in Curb.
- Indicates Set Nail in Curb.



FIELD CK'D OCT 23, 1978
 S. GARCIA

- × FD. Ramset Nail on T/C
- FD. LD. & TK. on T/C
- FD. "C" Nail on T/C
- Set LD. & TK. on T/C

OFFICIAL TIE PLAT
 CITY OF RIVERSIDE

These ties are for the purpose of perpetuating the found monumentation. No claim is made as to the relationship of the points or lines shown hereon to true boundary locations.

Scale:
 Date:
 Drawn by:
 W.O.:
 F.B.:

Sheet 1 of 1
 File No.: