

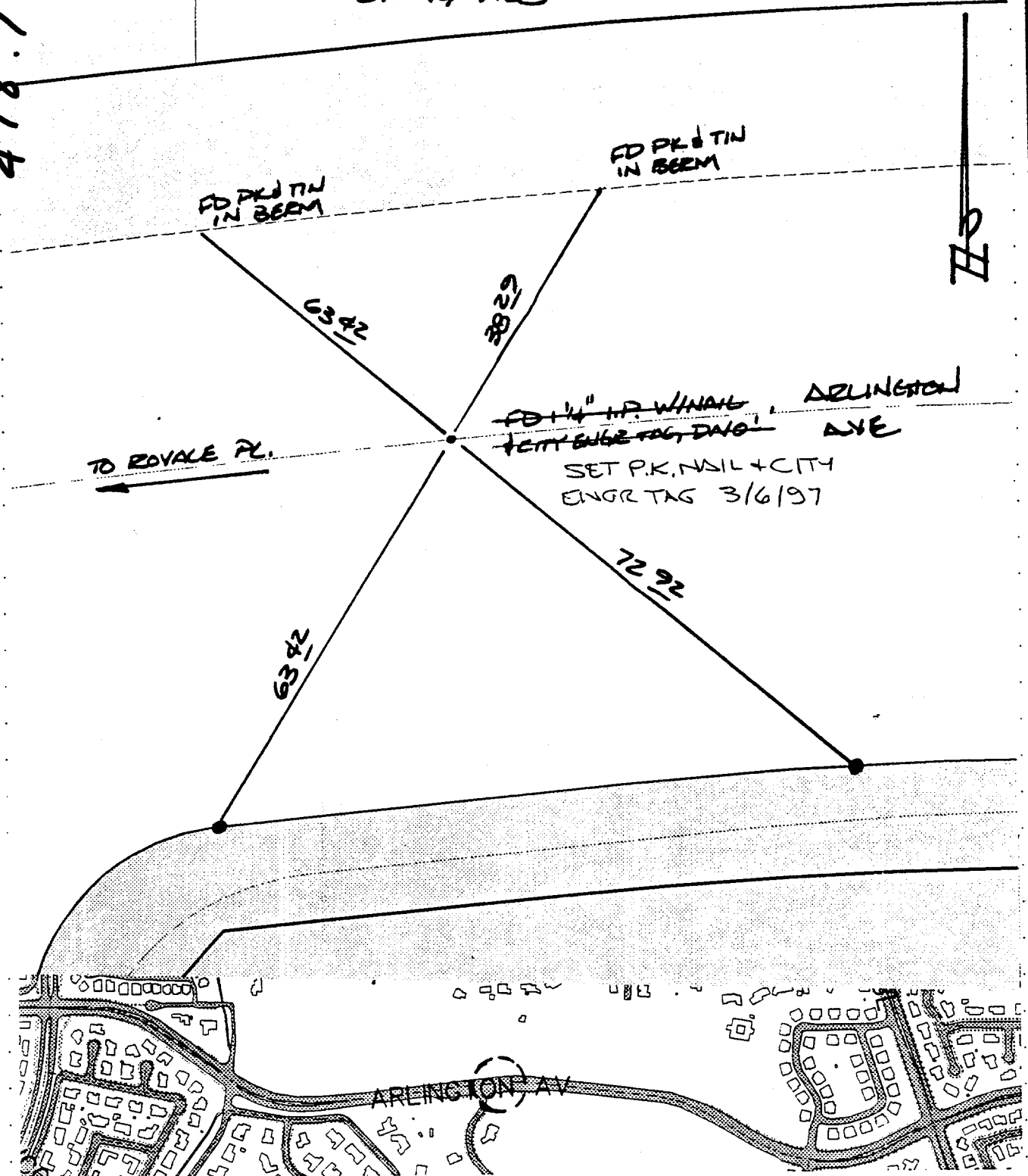
SWING TIES

X-STREET BET. ROYALE & SUNSET

OFFICE USE ONLY

STREET ARLINGTON

478.711



TO ROYALE PL.

FD 1/4" IR. WINDING DELINEATION
 SET P.K. NAIL + CITY
 ENGR TAG 3/6/97

- ✕ FD. Ramset Nail on T/C
- FD. "C" Nail on T/C

- FD. LD. & TK. on T/C
- SET LD. & TK. On T/C

SCALE: 1" = 20'

DATE: 6/24/96

DR. BY: Curt

W.O.:

F.B.:

OFFICIAL TIE PLAT

CITY OF RIVERSIDE

These ties are for the purpose of perpetuating the found monumentation. No claim is made as to the relationship of the points or lines shown hereon to true boundary locations.

SHEET

OF SHEETS
 FILE NO.: