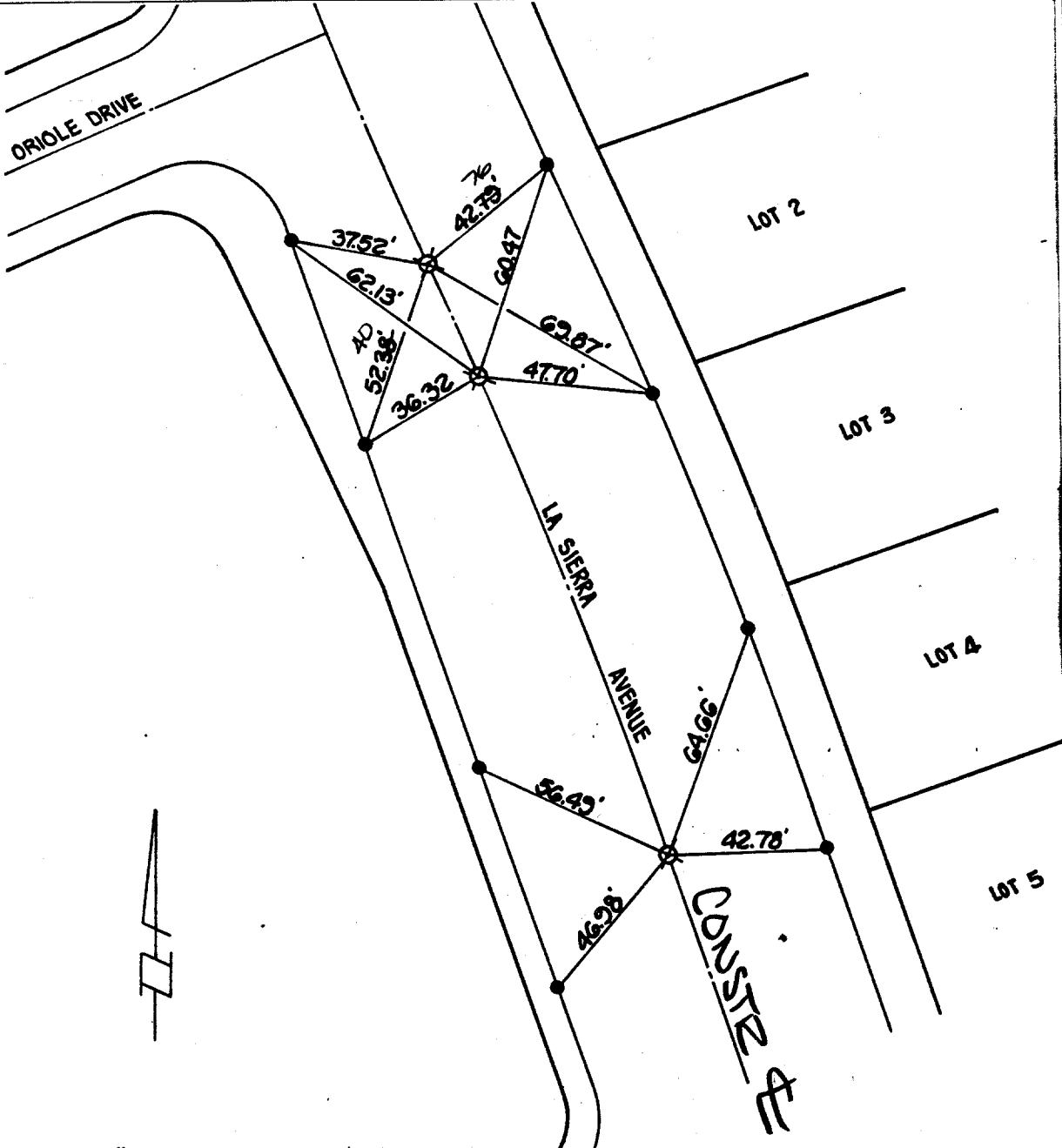


4788.71K

Street: LA SIERRA AVE

OFFICIAL USE ONLY

X-Street: Thrush Dr.



☒ SET 1" I.P. WITH PLASTIC PLUG STAMPED R.C.E. 13116, FLUSH.  
 ● SET DRIVE PIN IN TOP OF CURB, UNLESS OTHERWISE NOTED.

G.V.W. ASSOCIATES, INC.  
 WALNUT, CALIFORNIA

**MONUMENT TIES**  
 FOR TRACT 19718-1  
 MB 152/8-3

SHEET NO. 4 OF 10  
 DATE 5-21-85  
 SCALE 1" = 40'

✕ FD. Ramset Nail on T/C  
 ■ FD. "C" Nail on T/C

● FD. LD. & TK. on T/C  
 ○ Set LD. & TK. on T/C

Scale:  
 Date:  
 Drawn by:  
 W.O.:  
 F.B.:

**OFFICIAL TIE PLAT**  
 CITY OF RIVERSIDE

*These ties are for the purpose of perpetuating the found monumentation. No claim is made as to the relationship of the points or lines shown hereon to true boundary locations.*

Sheet 1 of 1  
 File No.:

284