

4791.TIF

Street: LA SIERRA AVE

OFFICIAL USE ONLY

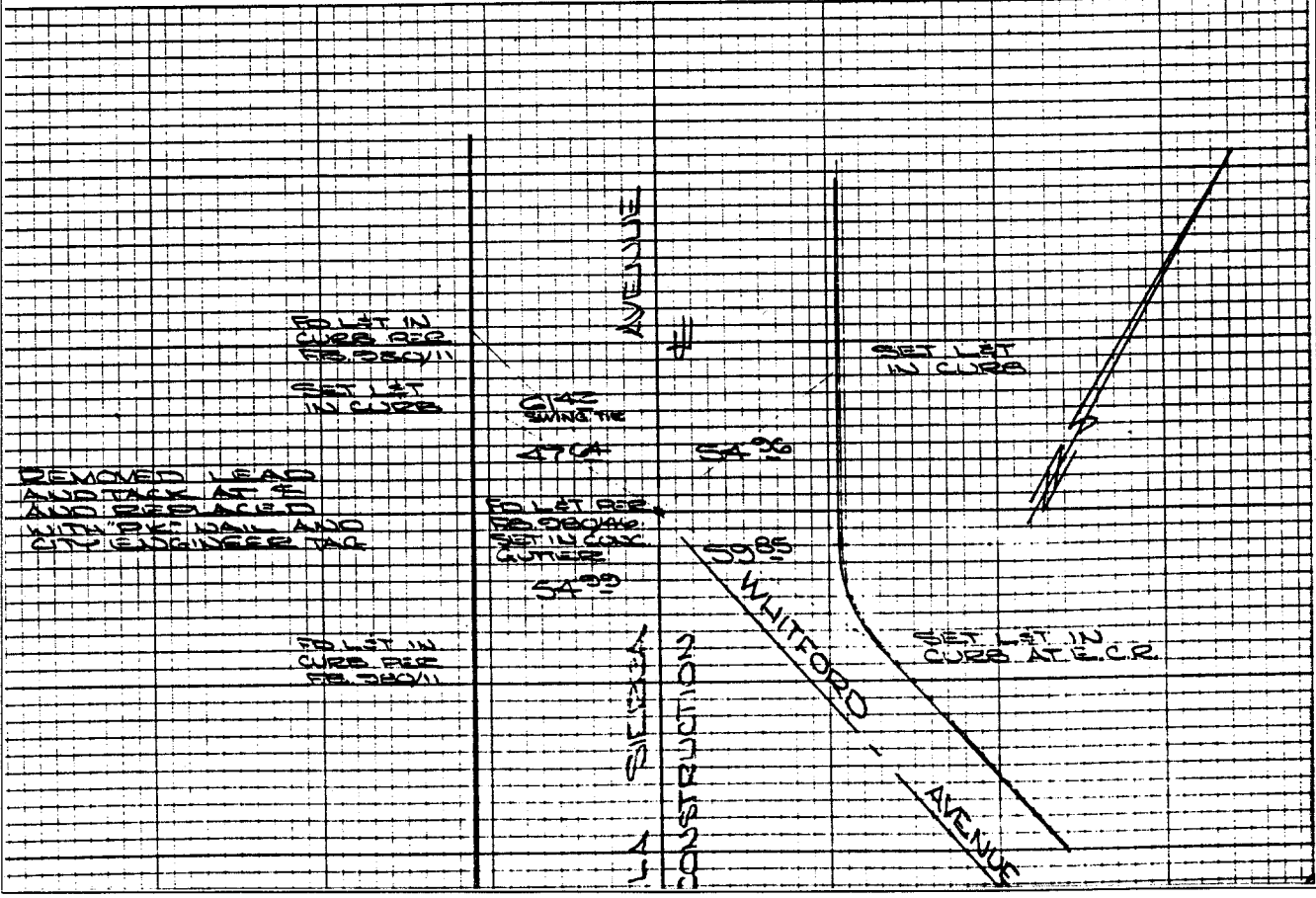
X-Street: Whitford Ave

LA SIERRA AVE
(CONSTRUCTION) SE
AT WHITFORD AVENUE

HISTORICAL DATA
FB 580/11.46
FB 525/48

TRANSIT TIES

CREW:
STEVE
LEWIS
ALLEN
APRIL 2, 75
FB 580/75



- ✗ FD. Ramset Nail on T/C
- FD. LD. & TK. on T/C
- FD. "C" Nail on T/C
- Set LD. & TK. on T/C

Scale:
Date:
Drawn by:
W.O.:
F.B.:

OFFICIAL TIE PLAT
CITY OF RIVERSIDE

These ties are for the purpose of perpetuating the found monumentation. No claim is made as to the relationship of the points or lines shown hereon to true boundary locations.

Sheet 1 of 1
File No.:

30