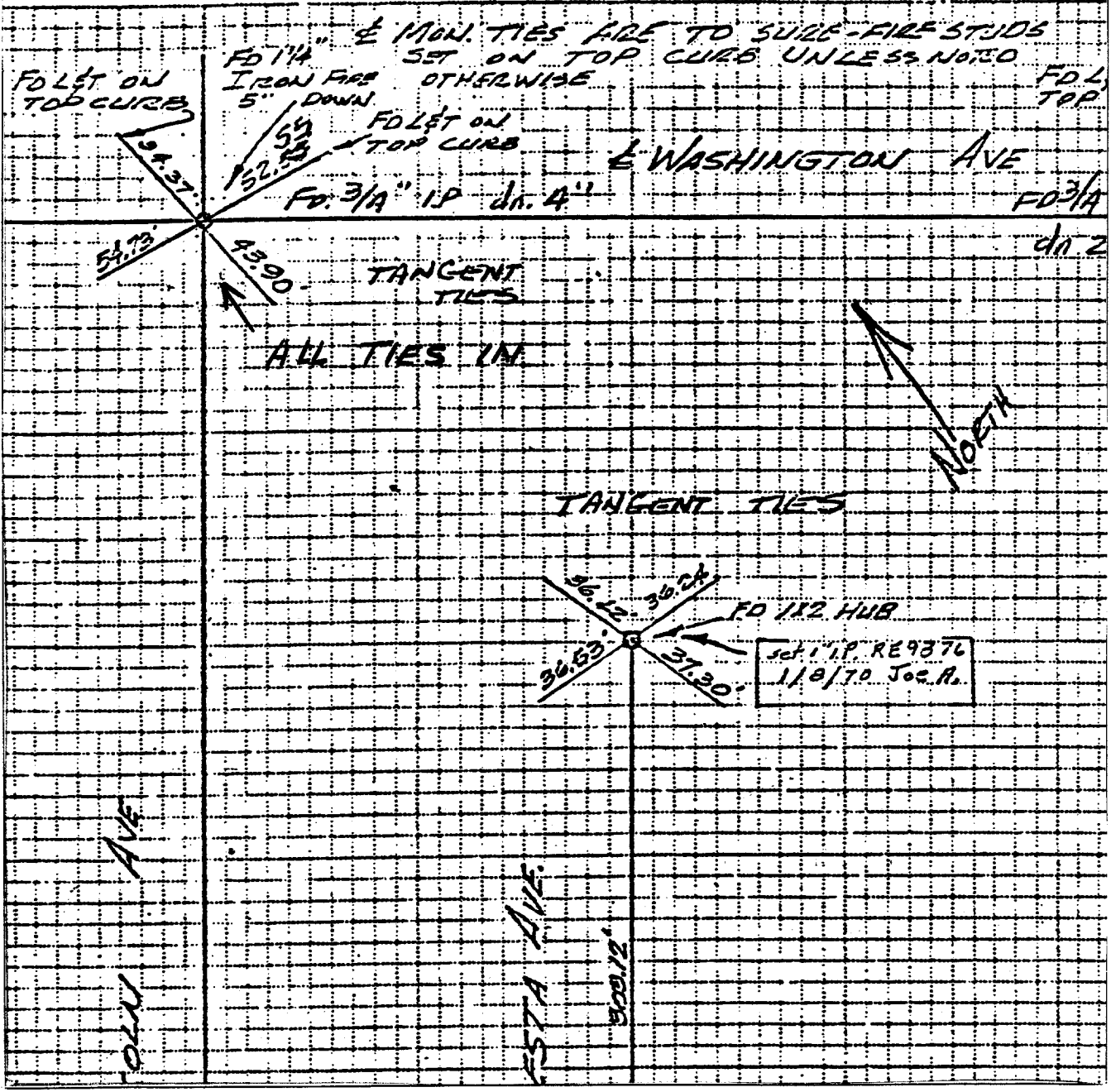


SURVEY OF TRACT # 4041 TIES TO E MON'S DATE OCT. 1

PARTY NO. AND MEMBERS PEREZ. DIAZ. WADLEY

P.S.: NOTES CALC'D BY: CALC'S CHECKED BY: MAP NO.:



Street: LINCOLN
 X-Street: WASHINGTON AVE
 OFFICIAL USE ONLY

- ✕ FD. Ramset Nail on T/C
- FD. LD. & TK. on T/C
- FD. "C" Nail on T/C
- Set LD. & TK. on T/C

Scale:
 Date:
 Drawn by:
 W.O.:
 F.B.: 1014

OFFICIAL TIE PLAT
 CITY OF RIVERSIDE
 These ties are for the purpose of perpetuating the found monumentation. No claim is made as to the relationship of the points or lines shown hereon to true boundary locations.

TRACT 4041
 TIES TO E MON'S
 Sheet 1 of 1
 File No.: