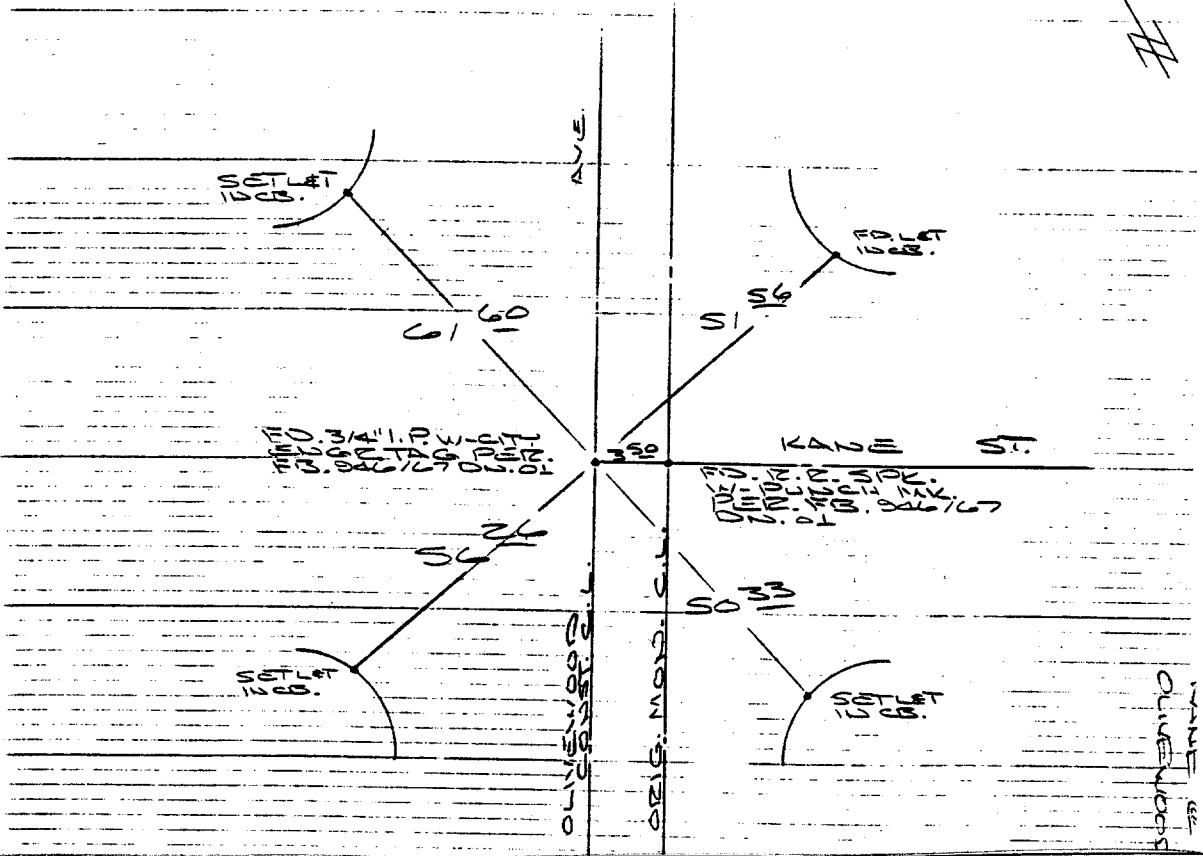


4949. TIF

SURVEY OF OLIVEWOOD AVE. & KANE ST. INDEX LL 45 PAGE 48
SURVEYED BY GARCIA-STEPHENS-LOPEZ DATE NOV. 22, 1985

HISTORICAL DATA
FB 523/38/58+65
R-1263 17/17
R-1262 17/17

TRANSIT TIES



Street: KANE

X-Street: OFFICIAL USE ONLY

OLIVEWOOD

- ✕ FD. Ramset Nail on T/C
- FD. "C" Nail on T/C

- FD. LD. & TK. on T/C
- Set LD. & TK. on T/C

Scale:

Date: NOV 22, 1985

Drawn by:

W.O.:

F.B.:

OFFICIAL TIE PLAT CITY OF RIVERSIDE

These ties are for the purpose of perpetuating the found monumentation. No claim is made as to the relationship of the points or lines shown hereon to true boundary locations.

Sheet 1 of 1

File No.: