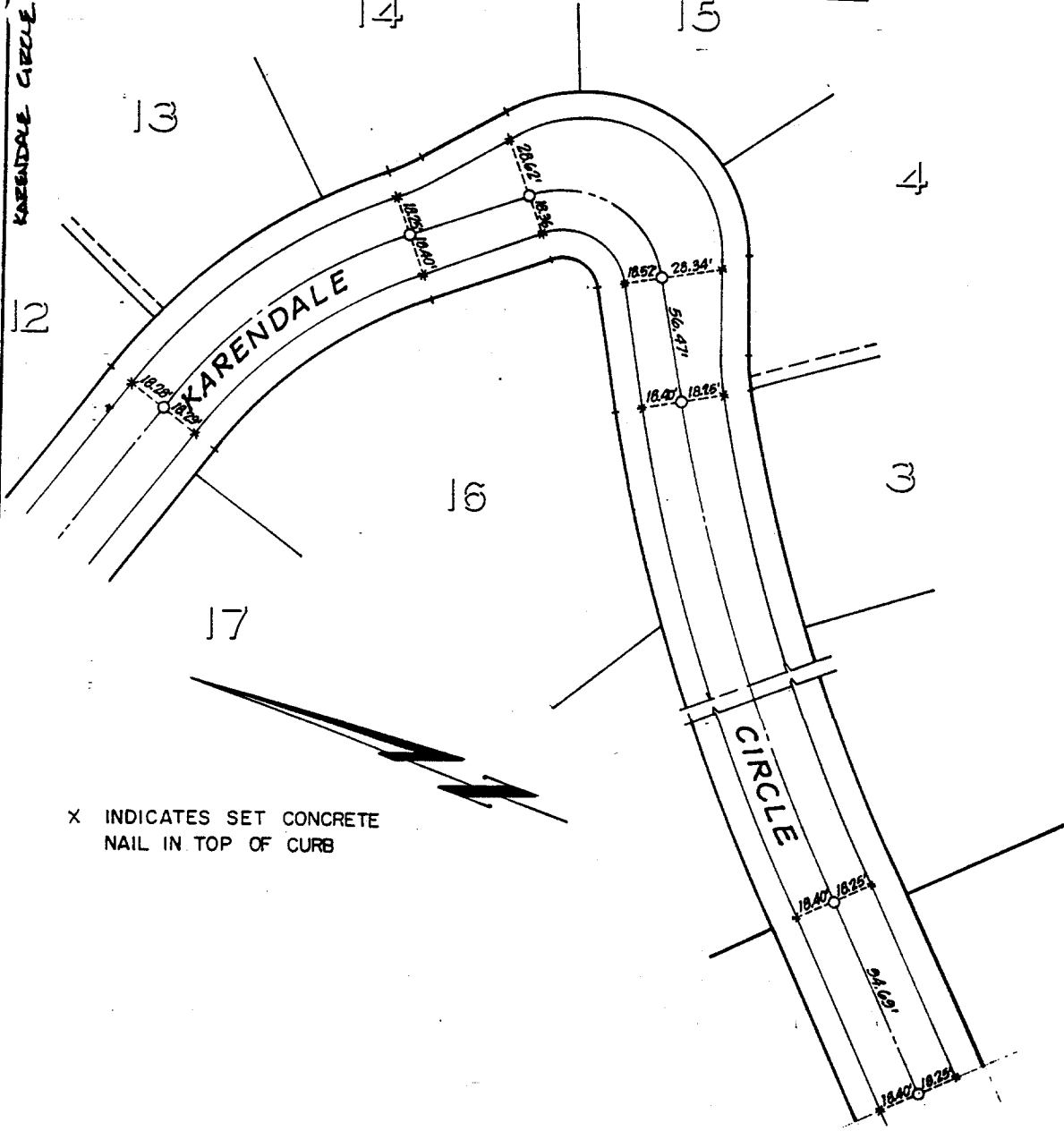


Street: **KARENDALE CIRCLE**

X-Street: \_\_\_\_\_  
OFFICIAL USE ONLY

**TRACT NO. 10005**



X INDICATES SET CONCRETE NAIL IN TOP OF CURB

**HAWKINS, ROBERTSON & ASSOC.**  
ENGINEERS & SURVEYORS  
RIVERSIDE, CALIF. 92506 3764 ELIZABETH STREET PH. 684-0622

DRWN BY: A.V.C. DATE: 4/2/87

- ✕ FD. Ramset Nail on T/C
- FD. LD. & TK. on T/C
- FD. "C" Nail on T/C
- Set LD. & TK. on T/C

Scale: \_\_\_\_\_  
Date: 4/9/87  
Drawn by: \_\_\_\_\_  
W.O.: 3618  
F.B.: \_\_\_\_\_

**OFFICIAL TIE PLAT**  
**CITY OF RIVERSIDE**

*These ties are for the purpose of perpetuating the found monumentation. No claim is made as to the relationship of the points or lines shown hereon to true boundary locations.*

TRACT NO 10005

Sheet 1 of 1  
File No.: \_\_\_\_\_