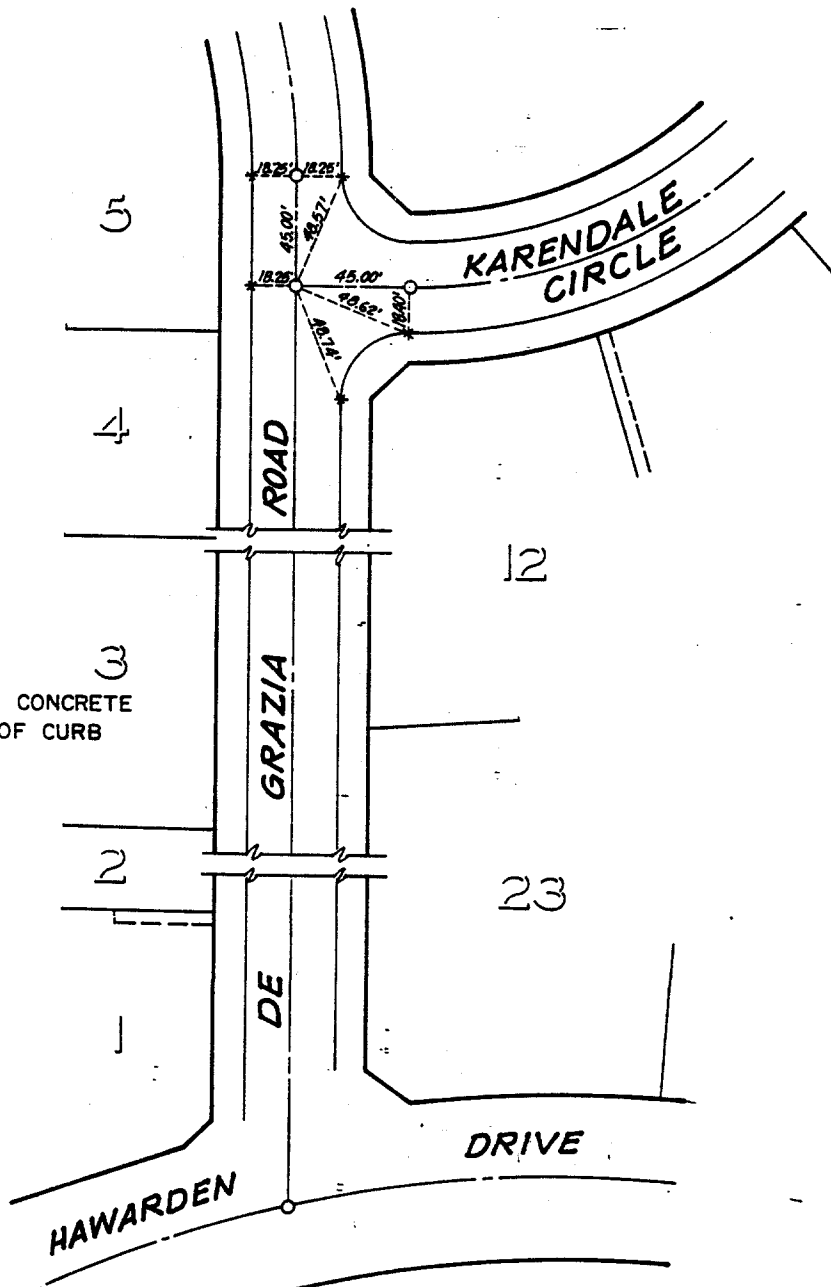


TRACT NO. 10005-1

KARENDALE CIRCLE (S.W.Y.)



* INDICATES SET CONCRETE NAIL IN TOP OF CURB



HAWKINS, ROBERTSON & ASSOC.
ENGINEERS & SURVEYORS

RIVERSIDE, CALIF. 92506 3784 ELIZABETH STREET PH. 694-0622

DRWN BY: A.V.C. DATE: 4/9/87
W.O. 3618 SCALE: NONE

× FD. Ramset Nail on T/C
■ FD. "C" Nail on T/C

● FD. LD. & TK. on T/C
○ Set LD. & TK. on T/C

Street: KARENDALE CIRCLE

OFFICIAL USE ONLY

X-Street: DE GRAZIA RD

Scale: NONE
Date: 4/9/87
Drawn by:
W.O.: 3618
F.B.:

OFFICIAL TIE PLAT
CITY OF RIVERSIDE

These ties are for the purpose of perpetuating the found monumentation. No claim is made as to the relationship of the points or lines shown hereon to true boundary locations.

TRACT NO 10005-1

Sheet 1 of 1
File No.: