

Street: KATHLEEN ST 335'± SE 1/4 X-Street: FOSTER DR

OFFICIAL USE ONLY

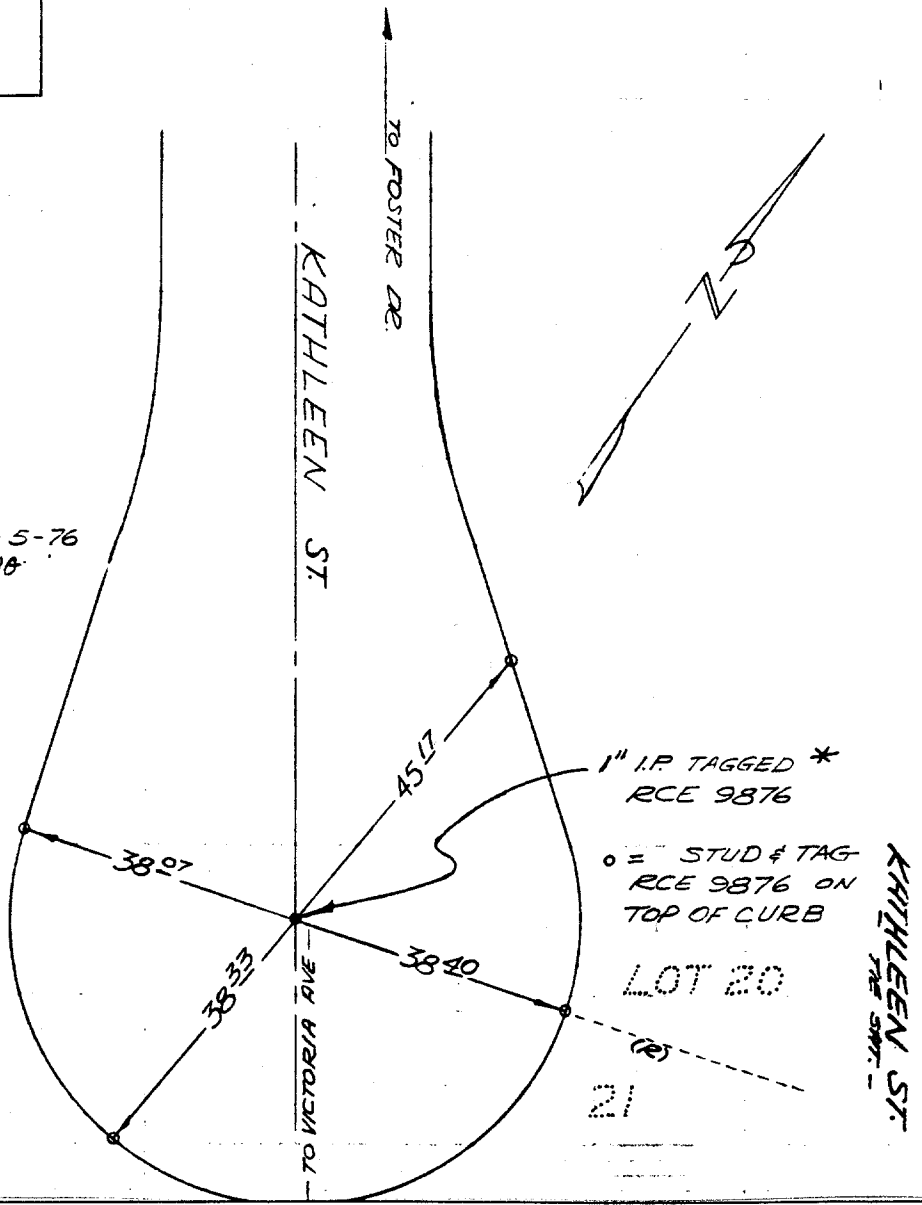
KATHLEEN ST
335'± SE 1/4 FOSTER DR.

HISTORICAL DATA
A. WEBB FB 1032/183

TRANSIT TIES

TRACT 5459

FIELD CRD - 5-76
↑ FOUND NOTHING



- ✕ FD. Ramset Nail on T/C
- FD. LD. & TK. on T/C
- FD. "C" Nail on T/C
- Set LD. & TK. on T/C

OFFICIAL TIE PLAT

CITY OF RIVERSIDE

These ties are for the purpose of perpetuating the found monumentation. No claim is made as to the relationship of the points or lines shown hereon to true boundary locations.

Scale:
Date:
Drawn by:
W.O.:
F.B.:

Sheet 1 of 1
File No.: