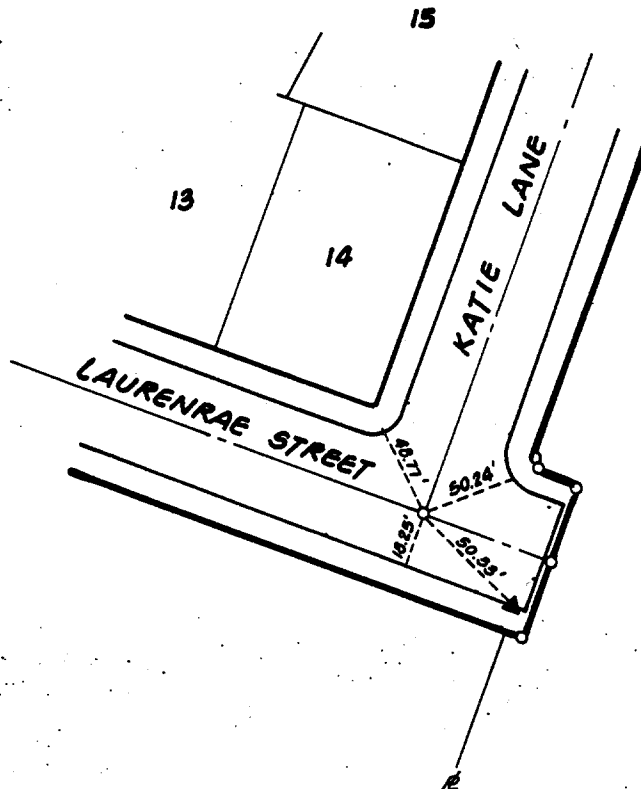


**TRACT NO. 21638-1**  
**CENTERLINE TIES**

KATIE LANE



**LEGEND:**

- ▲ DENOTES TIE AT PROPERTY LINE SET WITH NAIL AND TAG L.S. 5390 ON TOP OF CURB

NOTE: (ALL OTHER TIES SHOWN ARE SET WITH L&T ON TOP OF CURB)

Street: KATIE LN  
 X-Street: LAURENRAE ST  
 OFFICIAL USE ONLY

**ADKAN ENGINEERS**  
(A PROFESSIONAL ENGINEERING FIRM)  
 6820 Airport Drive  
 Riverside, California 92504  
 714/688-0241

DATE: 4/6/90 SCALE: 1"=60'

JOB NO: 3057 CLIENT: GRIFFITH HOMES

**GRIFFITH HOMES**

**CENTERLINE TIES**

- ✗ FD. Ramset Nail on T/C
- FD. LD. & TK. on T/C
- FD. "C" Nail on T/C
- Set LD. & TK. on T/C

Scale: 1"=60'  
 Date:  
 Drawn by:  
 W.O.:  
 F.B.:

**OFFICIAL TIE PLAT**  
**CITY OF RIVERSIDE**

*These ties are for the purpose of perpetuating the found monumentation. No claim is made as to the relationship of the points or lines shown hereon to true boundary locations.*

TRACT 21638-1  
 Sheet 1 of 1  
 File No.: