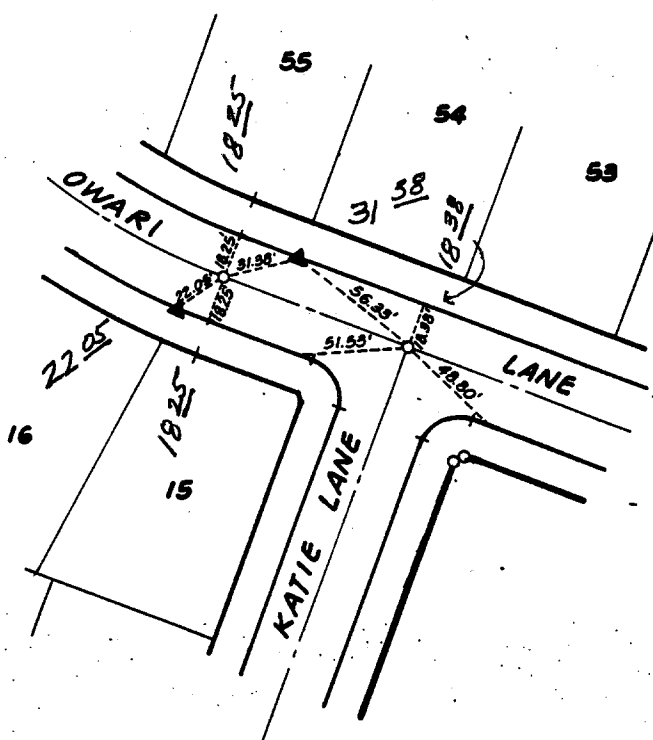


TRACT NO. 21638-1
CENTERLINE TIES

KATIE LANE



LEGEND:

▲ DENOTES TIE AT PROPERTY LINE SET WITH NAIL AND TAG L.S. 5390 ON TOP OF CURB

NOTE: (ALL OTHER TIES SHOWN ARE SET WITH L&T ON TOP OF CURB)

ADKAN ENGINEERS
 1700 BROADWAY, RIVERSIDE, CALIF. 92504
 4828 Airport Drive
 Riverside, California 92504
 714/988-0241

DATE: 4/6/90 SCALE: 1"=60'

JOB NO: 3057 CLIENT: GRIFFITH HOMES

GRIFFITH HOMES

CENTERLINE TIES

× FD. Ramset Nail on T/C
 ■ FD. "C" Nail on T/C

● FD. LD. & TK. on T/C
 ○ Set LD. & TK. on T/C

Scale: 1" = 60'

Date: 4/6/90

Drawn by:

W.O.:

F.B.:

OFFICIAL TIE PLAT
CITY OF RIVERSIDE

These ties are for the purpose of perpetuating the found monumentation. No claim is made as to the relationship of the points or lines shown hereon to true boundary locations.

Sheet 1 of 1

File No.:

Street: **KATIE LN**

X-Street: **OWARI LN.**
 OFFICIAL USE ONLY

OWARI LN.