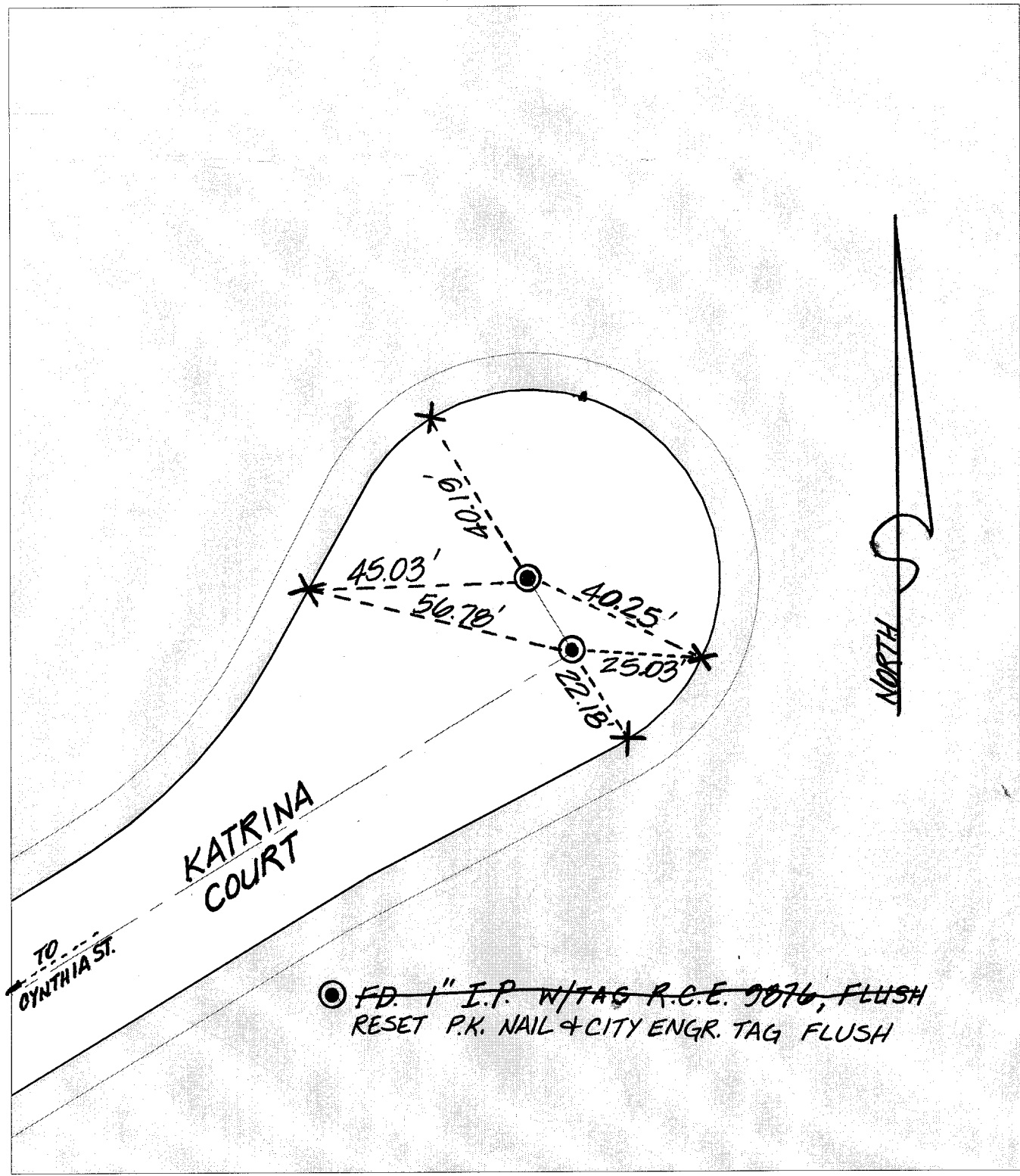


Street: KATRINA COURT
 X-Street: CUL-DE-SAC E. OF CYNTHIA
 OFFICIAL USE ONLY



● ~~FD. 1" I.P. W/TAG R.C.E. 9076, FLUSH~~
 RESET P.K. NAIL & CITY ENGR. TAG FLUSH

- ✕ FD. Ramset Nail on T/C (NO TAG)
- FD. LD. & TK. on T/C
- FD. "C" Nail on T/C
- Set LD. & TK. on T/C

Scale: 1" = 30'
 Date: 08/24/98
 Drawn by: KGE
 W.O.:
 F.B.:

OFFICIAL TIE PLAT
 CITY OF RIVERSIDE

These ties are for the purpose of perpetuating the found monumentation. No claim is made as to the relationship of the points or lines shown hereon to true boundary locations.

HISTORICAL DATA	
TR. NO. 6992	
AAW-FB 1039/103-105	
Sheet 1 of 1	
File No.:	