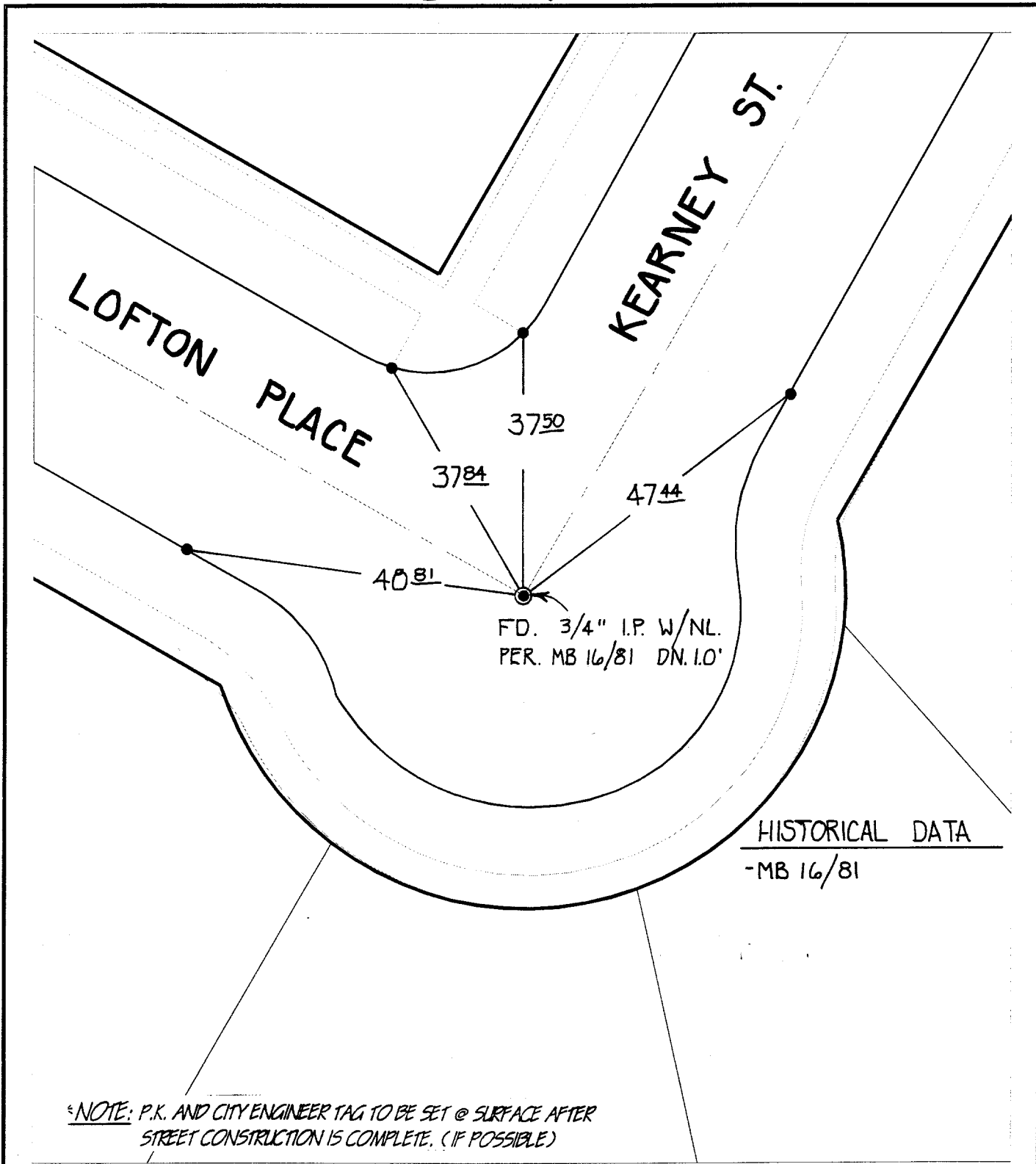


SWING TIES

4965.TIF



Street: LOFTON PLACE
 X-Street: KEARNEY STREET
 OFFICIAL USE ONLY

- ✕ FD. Ramset Nail on T/C
- FD. LD. & TK. on T/C
- FD. "C" Nail on T/C
- Set LD. & TK. on T/C

Scale: 1" = 20'
 Date: 07/12/00
 Drawn by: SURVEY
 W.O.:
 F.B.:

OFFICIAL TIE PLAT
 CITY OF RIVERSIDE

These ties are for the purpose of perpetuating the found monumentation. No claim is made as to the relationship of the points or lines shown hereon to true boundary locations.

Sheet 1 of 1
 File No.: