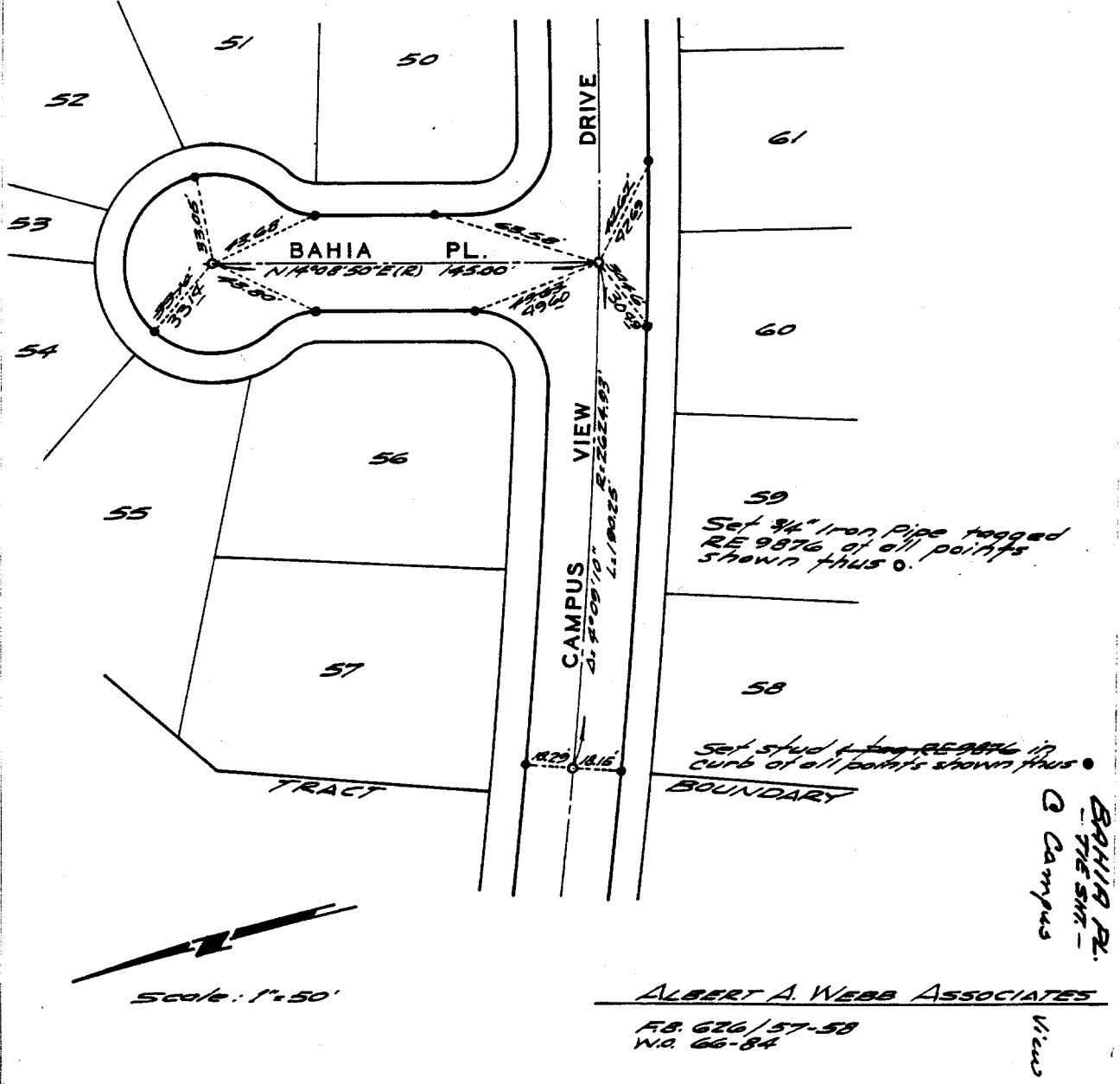


498715

**TRACT # 2881**

BEING A SUBDIVISION OF  
A PORTION OF THE S.E. 1/4  
OF SECTION 20, T.25., R.4W.,  
S.B.B. & M.

BAHIA PL.  
@  
CAMPUS VIEW DR.



Street: **BAHIA PL**  
X-Street: **CAMPUS VIEW DR**  
OFFICIAL USE ONLY

**ALBERT A. WEBB ASSOCIATES**  
F.B. 626/57-58  
W.O. 66-84

- ✕ FD. Ramset Nail on T/C
- FD. LD. & TK. on T/C
- FD. "C" Nail on T/C
- Set LD. & TK. on T/C

Scale:  
Date:  
Drawn by:  
W.O.:  
F.B.:

**OFFICIAL TIE PLAT**  
**CITY OF RIVERSIDE**

*These ties are for the purpose of perpetuating the found monumentation. No claim is made as to the relationship of the points or lines shown hereon to true boundary locations.*

Sheet 1 of 1  
File No.: