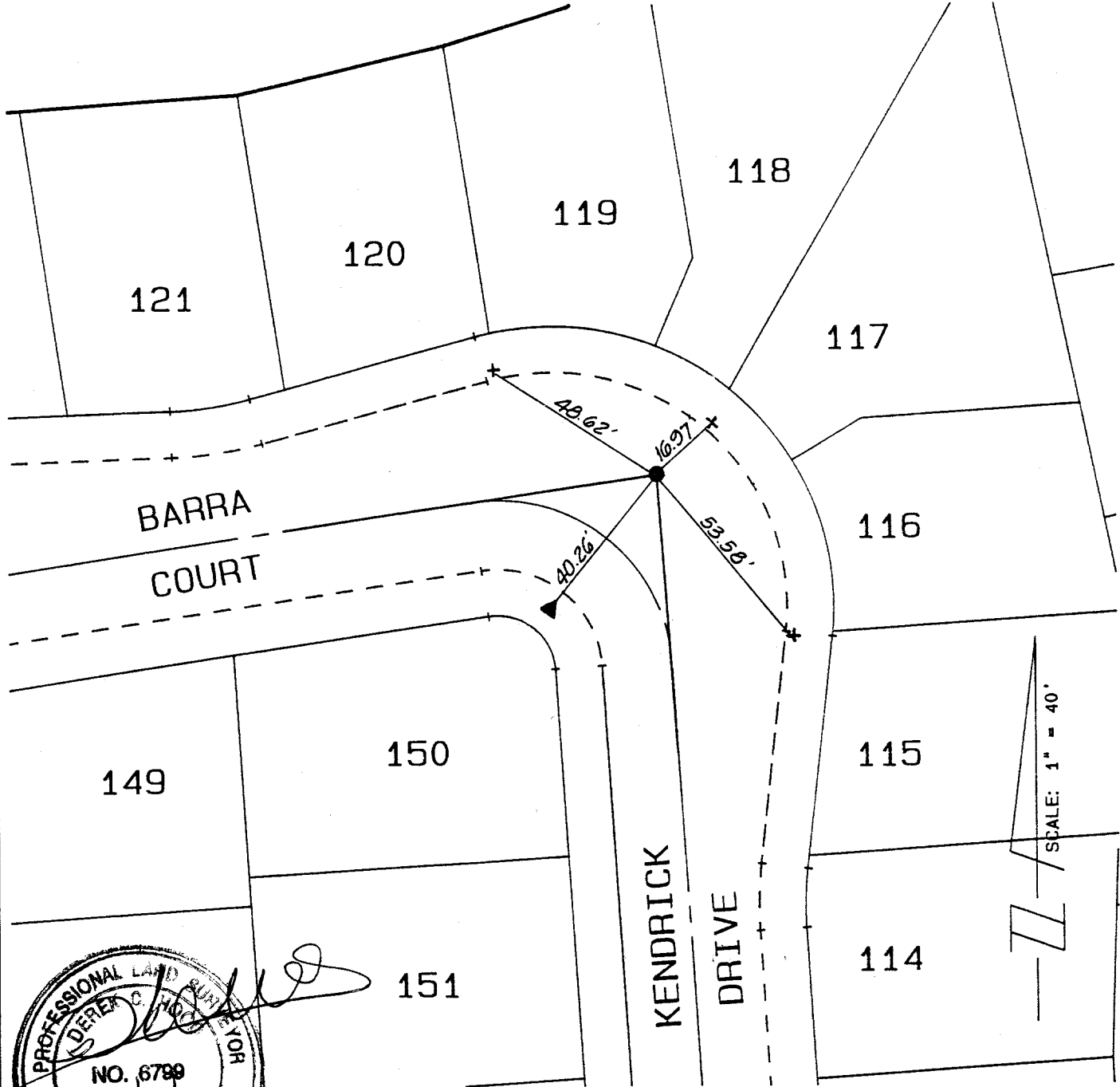


TIES FOR TRACT NO. 22408-1, M.B. 227/17-29

X-STREET BARRA
OFFICE USE ONLY
STREET KENDRICK



9/07/97

LEGEND

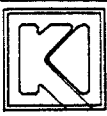
- - 6" SPIKE AND WASHER STAMPED LS 6799, FLUSH.
- + - NAIL AND TAG, RCE 30534 ON TOP OF CURB
- ▲ - LEAD AND TACK ON TOP OF CURB

SCALE: 1" = 40'

SCALE: 1" = 40'
 DATE: 10-20-95
 DR. BY: T.F.W.
 W.O.: 30650
 F.B.: 30650

OFFICIAL TIE PLAT
 CITY OF RIVERSIDE

PREPARED BY:



KEITH INTERNATIONAL, INC.
 INLAND EMPIRE DIVISION

22690 CACTUS AVE., #300
 MORENO VALLEY, CA 92557
 (909) 653-0234

SHEET
 19
 OF 28 SHEETS
 FILE NO.: 30728