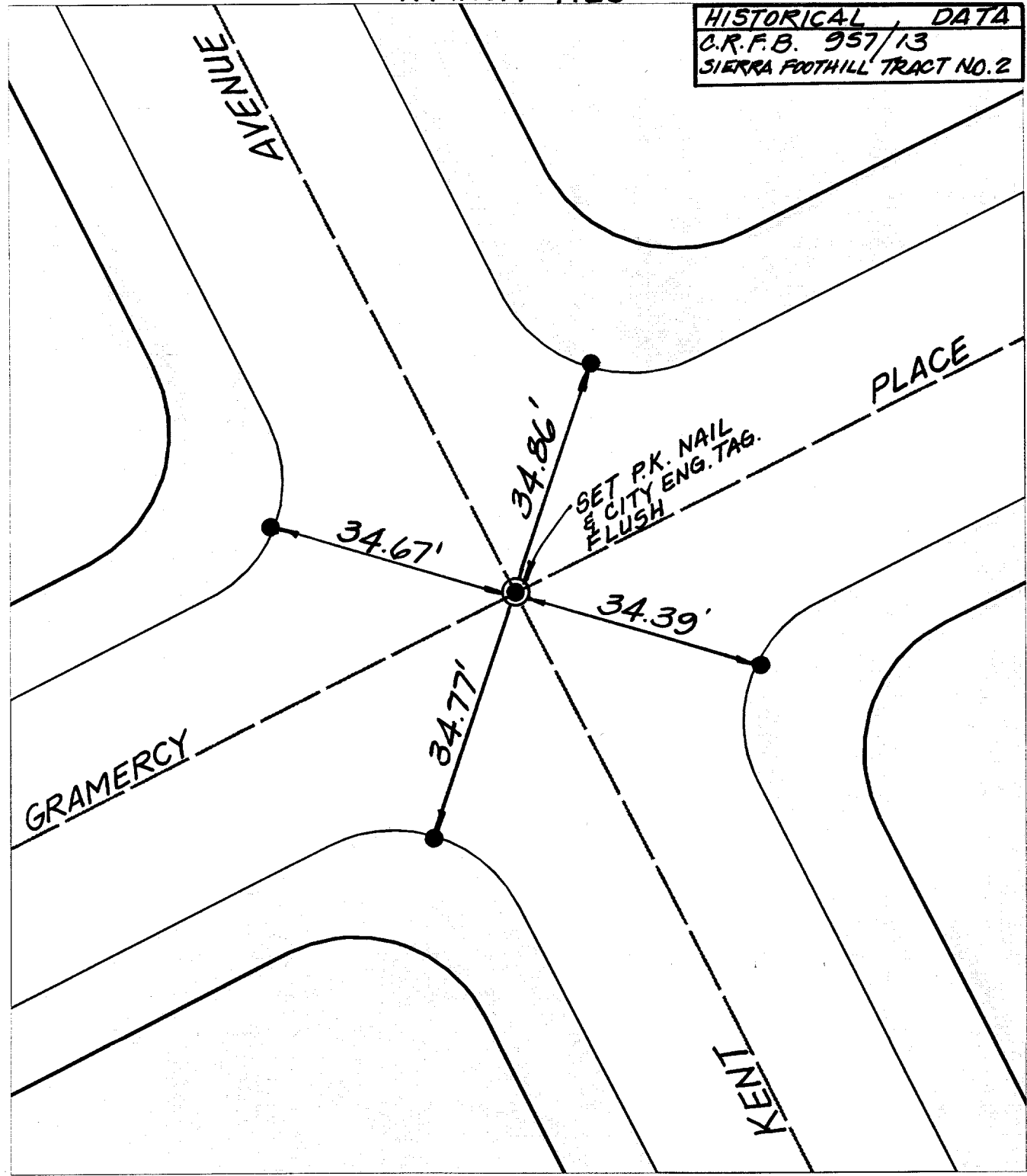


"TRANSIT TIES"

HISTORICAL DATA  
 C.R.F.B. 957/13  
 SIERRA FOOTHILL TRACT NO.2



Street: GRAMERCY PL  
 X-Street: KENT AVENUE  
 OFFICIAL USE ONLY

- × FD. Ramset Nail on T/C
- FD. LD. & TK. on T/C
- FD. "C" Nail on T/C
- Set LD. & TK. on T/C

Scale: 1" = 20'  
 Date: 05/12/99  
 Drawn by: GURN  
 W.O.:  
 F.B.:

## OFFICIAL TIE PLAT

### CITY OF RIVERSIDE

*These ties are for the purpose of perpetuating the found monumentation. No claim is made as to the relationship of the points or lines shown hereon to true boundary locations.*



Sheet 1 of 1  
 File No.: