

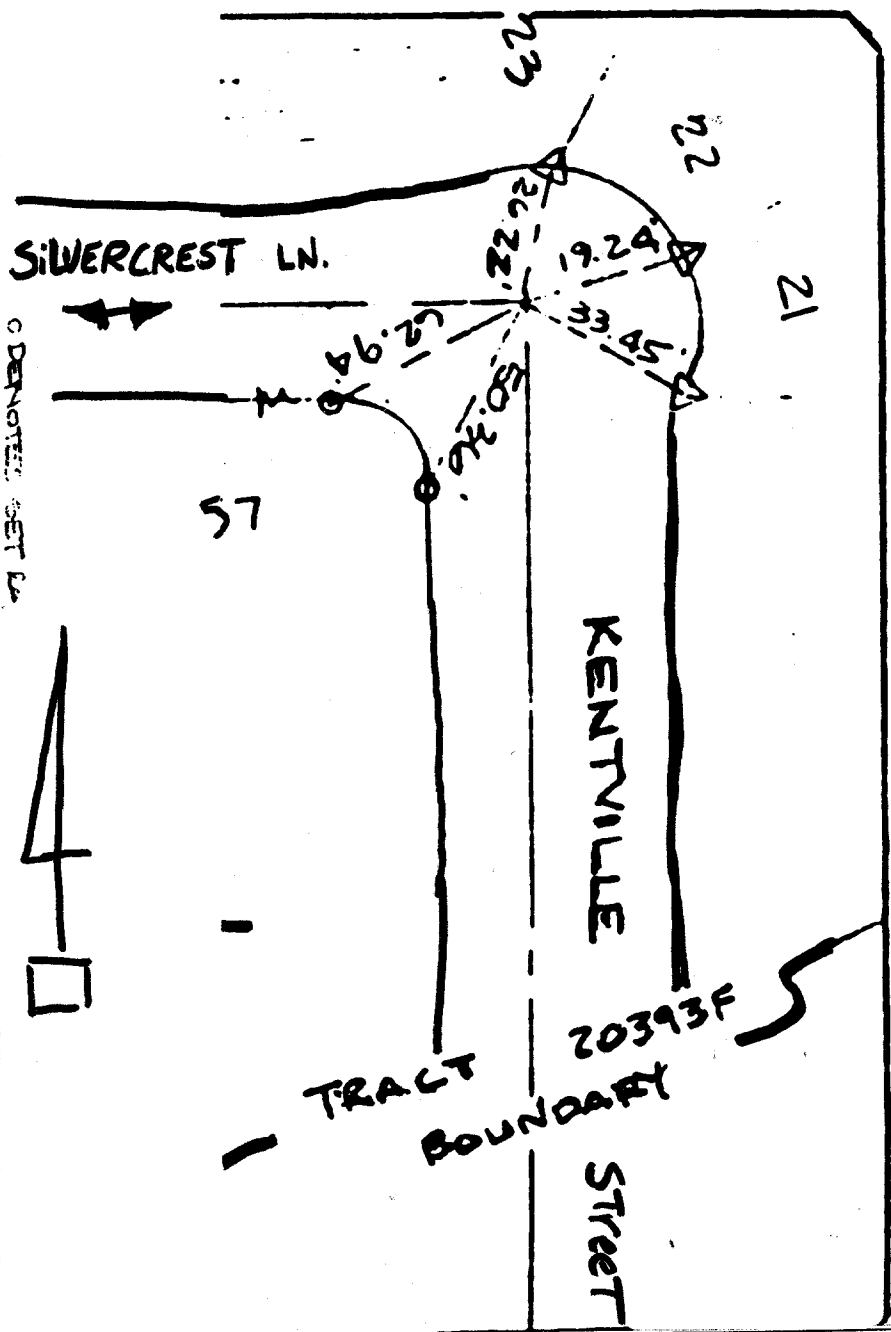
4998.TIF

Street: KENTVILLE ST. X-Street: SILVERCREST LN.

OFFICIAL USE ONLY

BARTON ST.

TRACT 21834-1



FROM THE TIES FOR TR 20393 F3
 VAN DALE CIVIL ENGINEERING
 10000 HIGHWAY 1
 RIVERSIDE, CALIFORNIA 92504

WO No. 90-12052
 Date 10-3-90

REF AM
 26 99 04
 26 99 61 (m)

21 24
 20 29

FO 12052/39

NOTED SET BY
 J. Davidson Associates, Inc.

- ✕ FD. Ramset Nail on T/C
- FD. LD. & TK. on T/C
- FD. "C" Nail on T/C
- Set LD. & TK. on T/C

Scale:
 Date:
 Drawn by:
 W.O.:
 F.B.:

OFFICIAL TIE PLAT
CITY OF RIVERSIDE

These ties are for the purpose of perpetuating the found monumentation. No claim is made as to the relationship of the points or lines shown hereon to true boundary locations.

Sheet 1 of 1
 File No.: