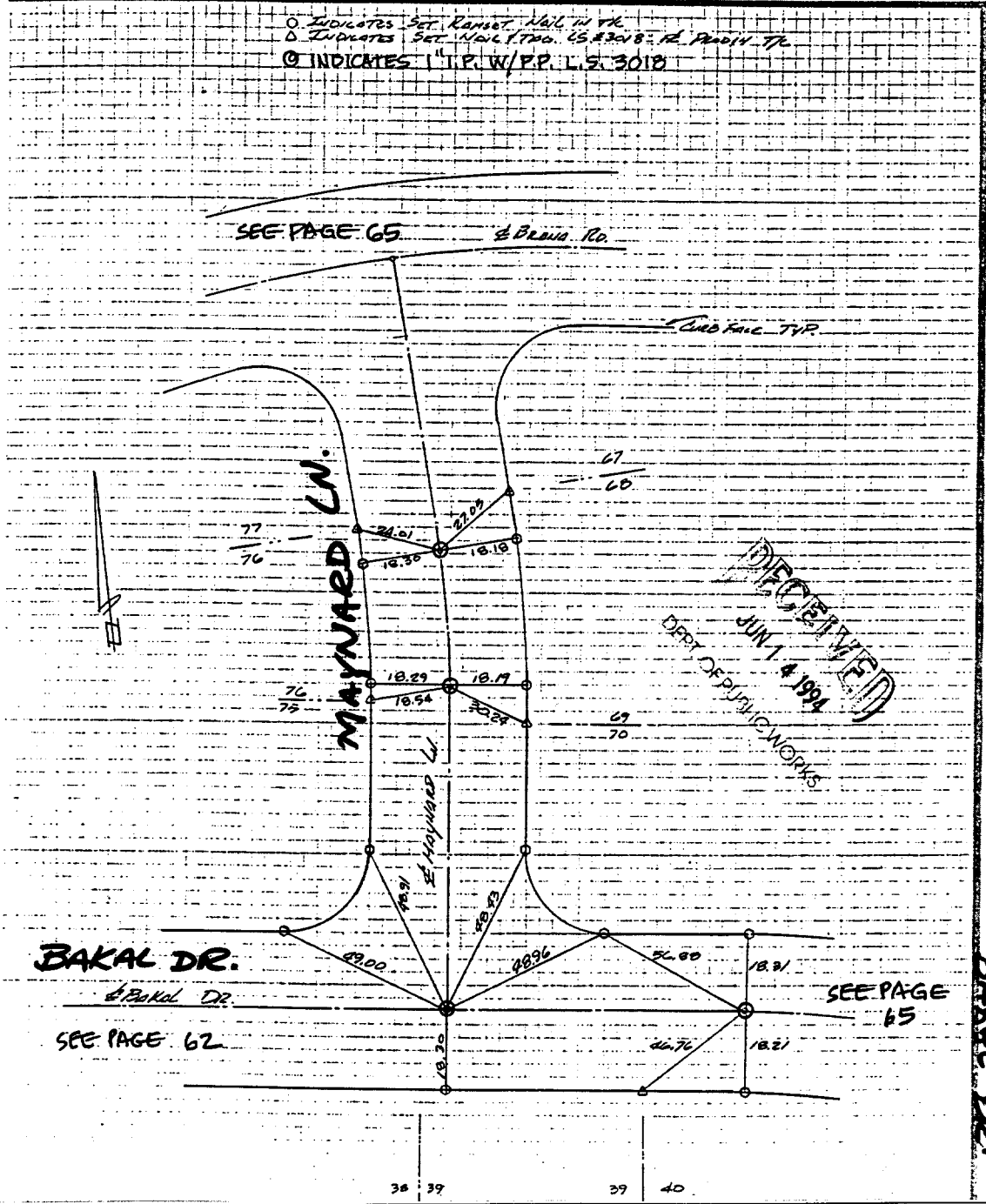


4117.005

SURVEY NOTES BAKAL C MAYNARD

TRACT 22275 ENGINEERING ARCHITECTURE PLANNING SURVEYING LANDSCAPE ARCHITECTURE
 SURVEY OF E Ties SHEET 1 OF 4 SHEETS
 FOR TR 22275-4 (E) Long W.O. No. 89-11309 Date 2-12-90
 SURVEY PARTY 230221 H's class REF. A.M.

○ INDICATES SET RAMSET NAIL TO T/C
 ● INDICATES SET "C" NAIL TO T/C
 ⊙ INDICATES 1" T.P. W/P.P. L.S. 3018



Street: BAKAL DR.
 X-Street: MAYNARD
 OFFICIAL USE ONLY

- × FD. Ramset Nail on T/C
- FD. LD. & TK. on T/C
- FD. "C" Nail on T/C
- Set LD. & TK. on T/C

Scale:
 Date:
 Drawn by:
 W.O.:
 F.B.:

OFFICIAL TIE PLAT
CITY OF RIVERSIDE
 These ties are for the purpose of perpetuating the found monumentation. No claim is made as to the relationship of the points or lines shown hereon to true boundary locations.

Sheet 1 of 1
 File No.: