

Street: **KENTVILLE ST.**

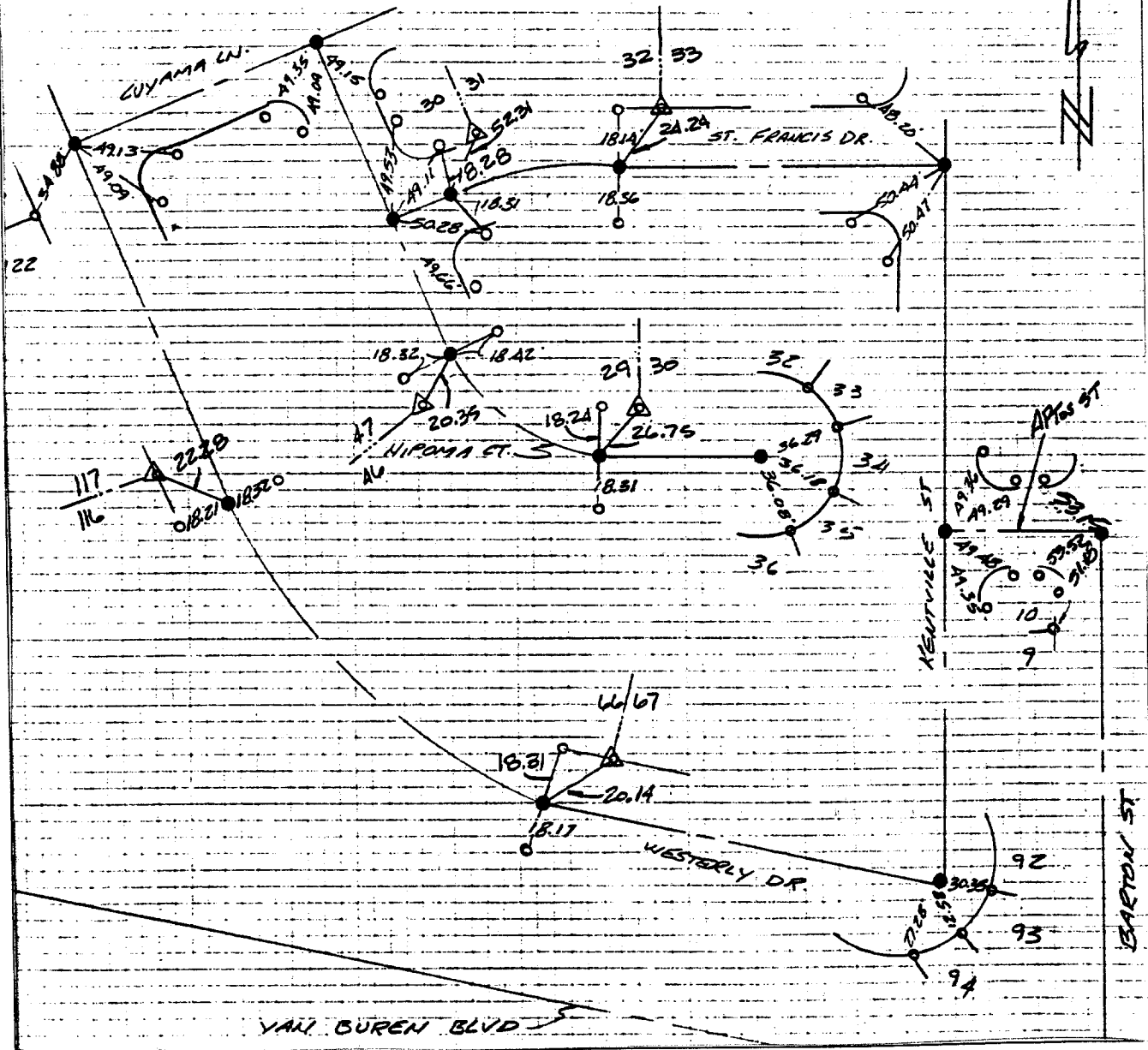
OFFICIAL USE ONLY

X-Street: **FRANCIS DR & WESTERLY DR**

- = 1" I.P. W/P.P. L.S. 3018
- = SET RAMSET NAIL IN T/C

NOTE: SET RAMSET & L.S. 3018 TAG IN T/C @ ALL SIDE  
R. PRODS. EXCEPTING L.L. 123-124 & 9-10

△ = FD. N TAG. L.S. 3018 IN T/C



- × FD. Ramset Nail on T/C
- FD. LD. & TK. on T/C
- FD. "C" Nail on T/C
- Set LD. & TK. on T/C

Scale:  
Date:  
Drawn by:  
W.O.: 86-9447  
F.B.: 9447/151

## OFFICIAL TIE PLAT

### CITY OF RIVERSIDE

These ties are for the purpose of perpetuating the found monumentation. No claim is made as to the relationship of the points or lines shown hereon to true boundary locations.

TR 20393-1

Sheet 1 of 3  
File No.: