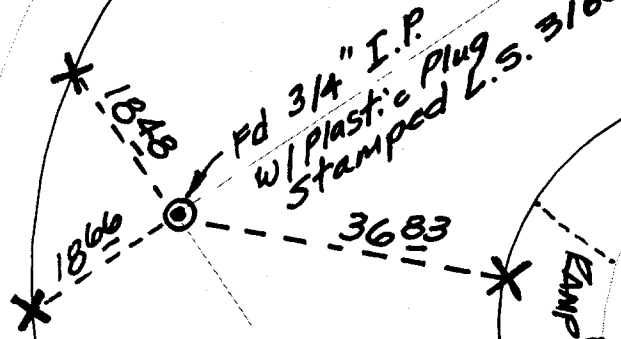


SWING TIES

Street:

LORRAINE DRIVE

TO MAUDE



EAMP

KEVIN COURT

X-Street:
OFFICIAL USE ONLY

LORRAINE DR.

- ✕ FD. Ramset Nail on T/C
- FD. "C" Nail on T/C

- FD. LD. & TK. on T/C
- Set LD. & TK. on T/C

Scale: 1" = 20'

Date: 08/23/99

Drawn by: L. Harris

W.O.:

F.B.:

OFFICIAL TIE PLAT

CITY OF RIVERSIDE

These ties are for the purpose of perpetuating the found monumentation. No claim is made as to the relationship of the points or lines shown hereon to true boundary locations.



Sheet of

File No.: