

503.714



J.F. Davidson Associates, Inc.
ENGINEERING PLANNING SURVEYING
LANDSCAPE ARCHITECTURE

F.B. 11410169

SURVEY OF Control Lines Ties

SHEET 4 OF 5 SHEETS

FOR Storage Tr 22275-2

W.O. No. 11410

Date 3-18-90

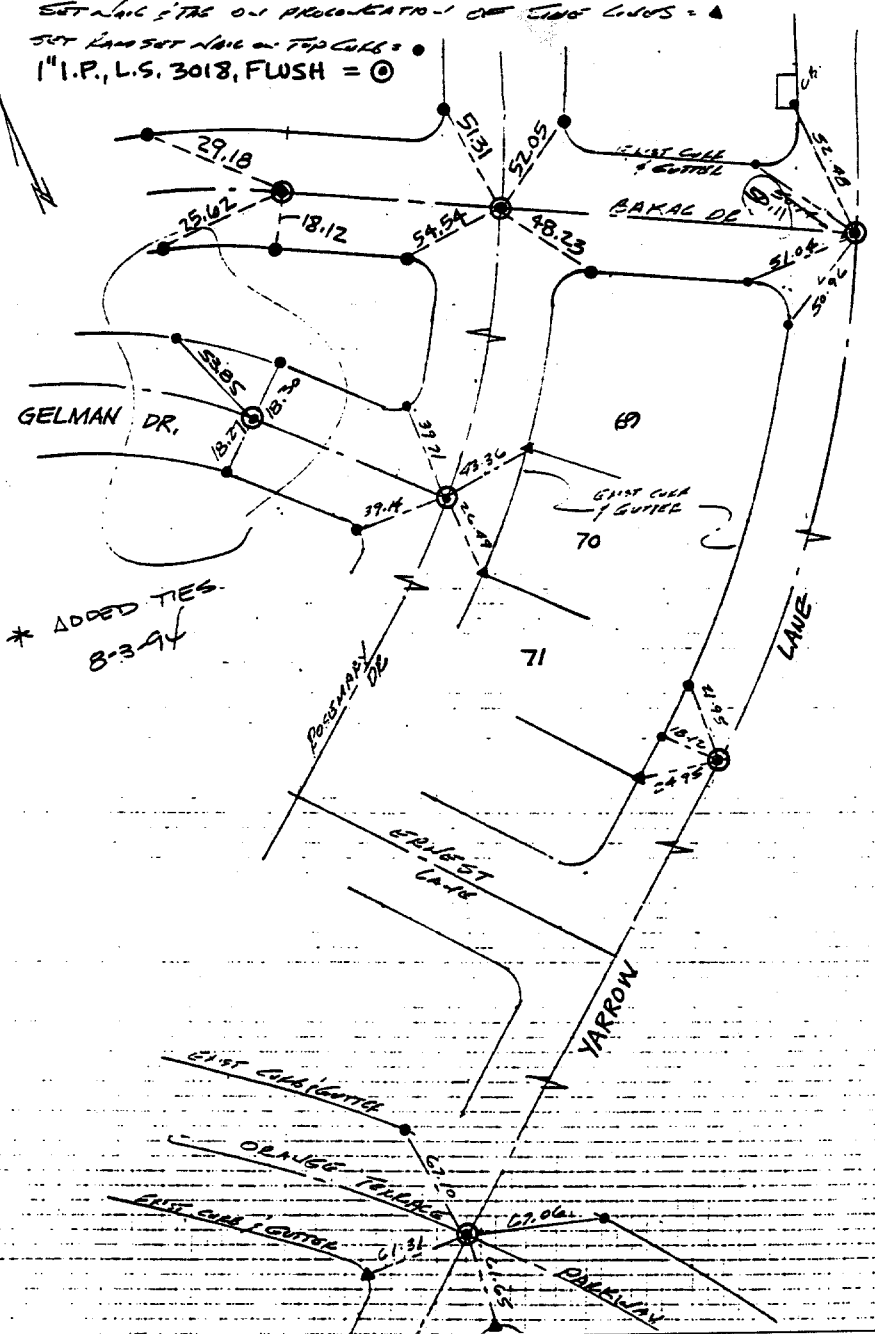
SURVEY PARTY GULLS SALGANO MATHEW

REF.

A.M.

GELMAN DR. of
ROSEMARY DR.

ESTABLISH TIES ON PROLONGATION OF CURVED LINES = A
50' LAM SET NAIL ON TOP CURVE = ●
1" I.P., L.S. 3018, FLUSH = ○



- ✕ FD. Ramset Nail on T/C
- FD. LD. & TK. on T/C
- FD. "C" Nail on T/C
- Set LD. & TK. on T/C

Scale:
Date:
Drawn by:
W.O.::
F.B.::

OFFICIAL TIE PLAT

CITY OF RIVERSIDE

These ties are for the purpose of perpetuating the found monumentation. No claim is made as to the relationship of the points or lines shown hereon to true boundary locations.

Sheet 1 of 1
File No.:

Street: BAKAL DR.
X-Street: ROSEMARY DR.
OFFICIAL USE ONLY