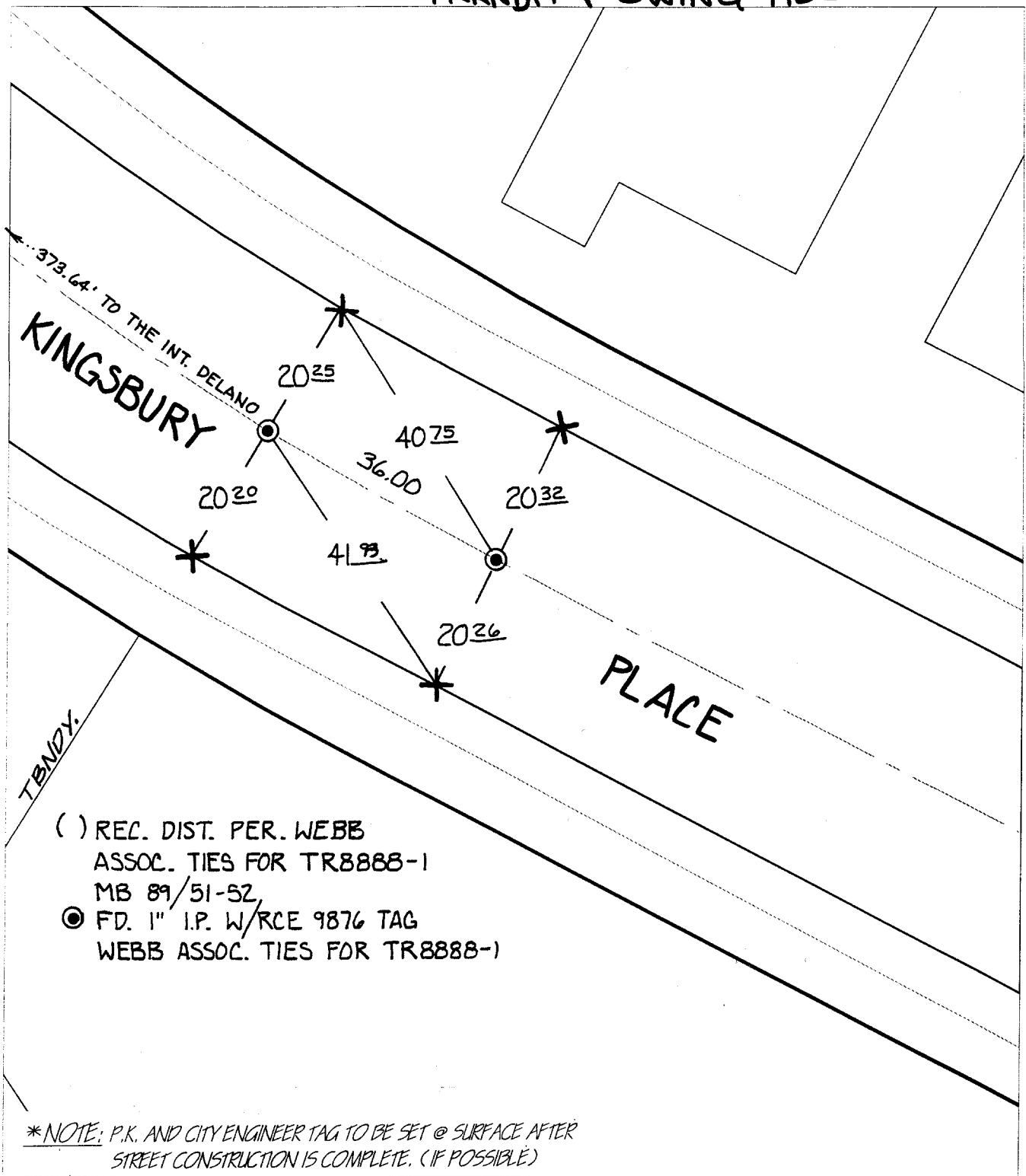


TRANSIT & SWING TIES

Street:

KINSBURG PLACE

X-Street: SE OF DELANO DRIVE  
OFFICIAL USE ONLY



- ( ) REC. DIST. PER. WEBB ASSOC. TIES FOR TR8888-1 MB 89/51-52
- FD. 1" I.P. W/RCE 9876 TAG WEBB ASSOC. TIES FOR TR8888-1

\*NOTE: P.K. AND CITY ENGINEER TAG TO BE SET @ SURFACE AFTER STREET CONSTRUCTION IS COMPLETE. (IF POSSIBLE)

- ✕ FD. Ramset Nail on T/C
- FD. LD. & TK. on T/C
- FD. "C" Nail on T/C
- Set LD. & TK. on T/C

Scale: 1" = 20'

Date: 01/08/00

Drawn by: SURVEY

W.O.:

F.B.:

**OFFICIAL TIE PLAT**  
CITY OF RIVERSIDE

*These ties are for the purpose of perpetuating the found monumentation. No claim is made as to the relationship of the points or lines shown hereon to true boundary locations.*



Sheet 1 of 1

File No.: