

TRACT NO 4917

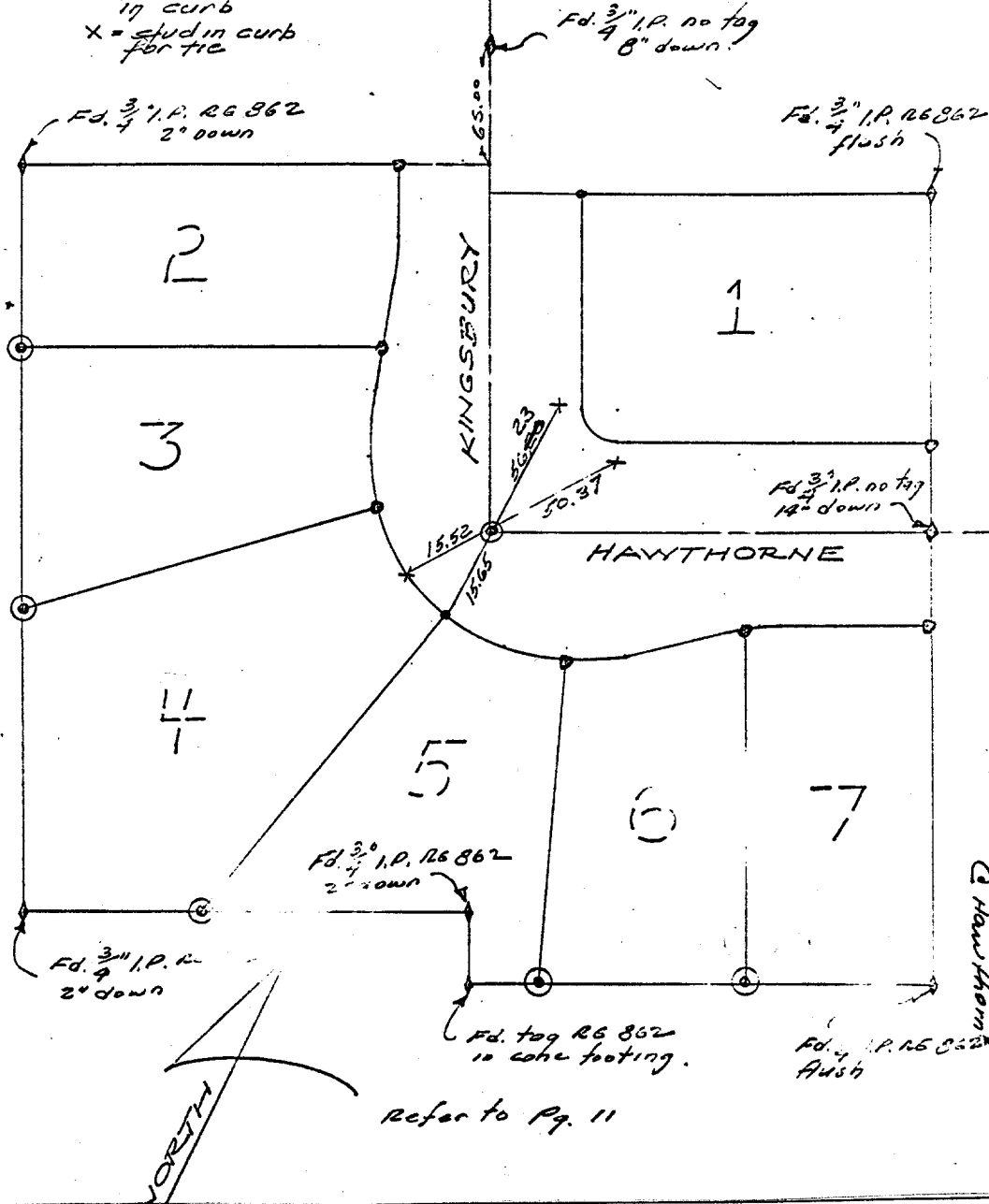
Nov. 15 '15

June 13-75 72-570

Bailey Beeler Allred 1029 129

Kingsbury AT  
HAWTHORNE

Note © = Set 1" IP  
RCE 9870, flush  
● = Stud 7 Tag  
RCE 9870  
17 curb  
x = stud in curb  
for tie



Street: KINGSBURY  
X-Street: HAWTHORNE  
OFFICIAL USE ONLY

× FD. Ramset Nail on T/C  
■ FD. "C" Nail on T/C

● FD. LD. & TK. on T/C  
○ Set LD. & TK. on T/C

Scale:

Date:

Drawn by:

W.O.:

F.B.: 1029

**OFFICIAL TIE PLAT**  
CITY OF RIVERSIDE

These ties are for the purpose of perpetuating the found monumentation. No claim is made as to the relationship of the points or lines shown hereon to true boundary locations.

TRACT NO 4917

Sheet 1 of 1

File No.: