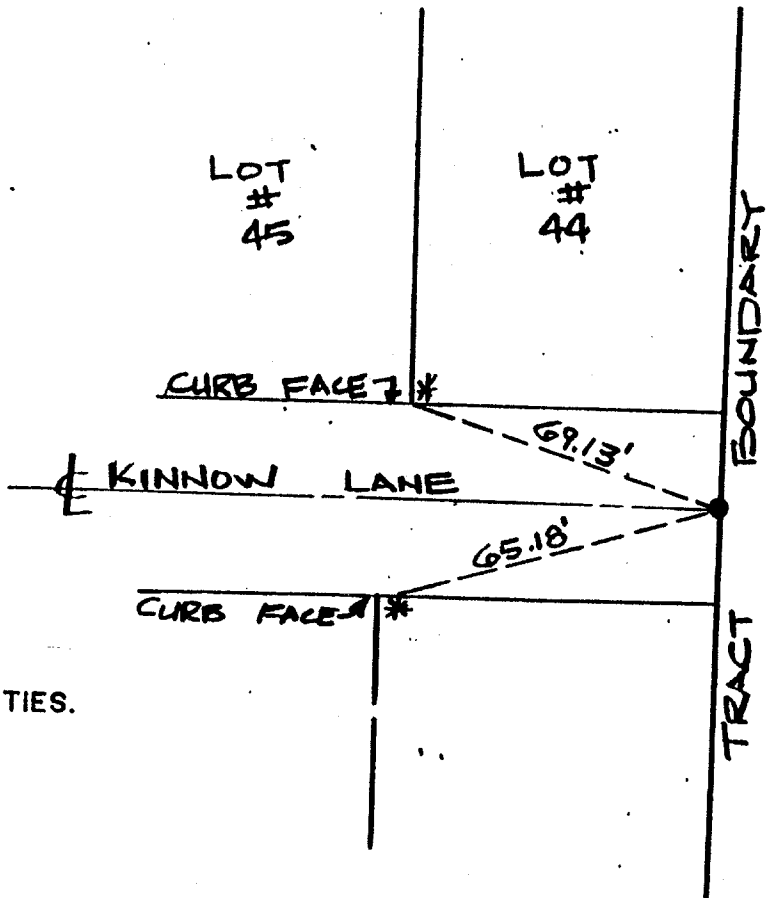


Street: KINNOW LANE

OFFICIAL USE ONLY

X-Street: TRACT BOUNDARY



NOTE :  
ALL TIES ARE SWING TIES.

- \* SET RAMSET NAIL IN CURB
- SET 1" IRON PIPE, TAGGED LS 5306

- × FD. Ramset Nail on T/C
- FD. LD. & TK. on T/C
- FD. "C" Nail on T/C
- Set LD. & TK. on T/C

Scale:  
Date: OCT 1988  
Drawn by:  
W.O.:  
F.B.:

**OFFICIAL TIE PLAT**  
**CITY OF RIVERSIDE**

*These ties are for the purpose of perpetuating the found monumentation. No claim is made as to the relationship of the points or lines shown hereon to true boundary locations.*

TRACT 19958-1  
Sheet 1 of 1  
File No.: