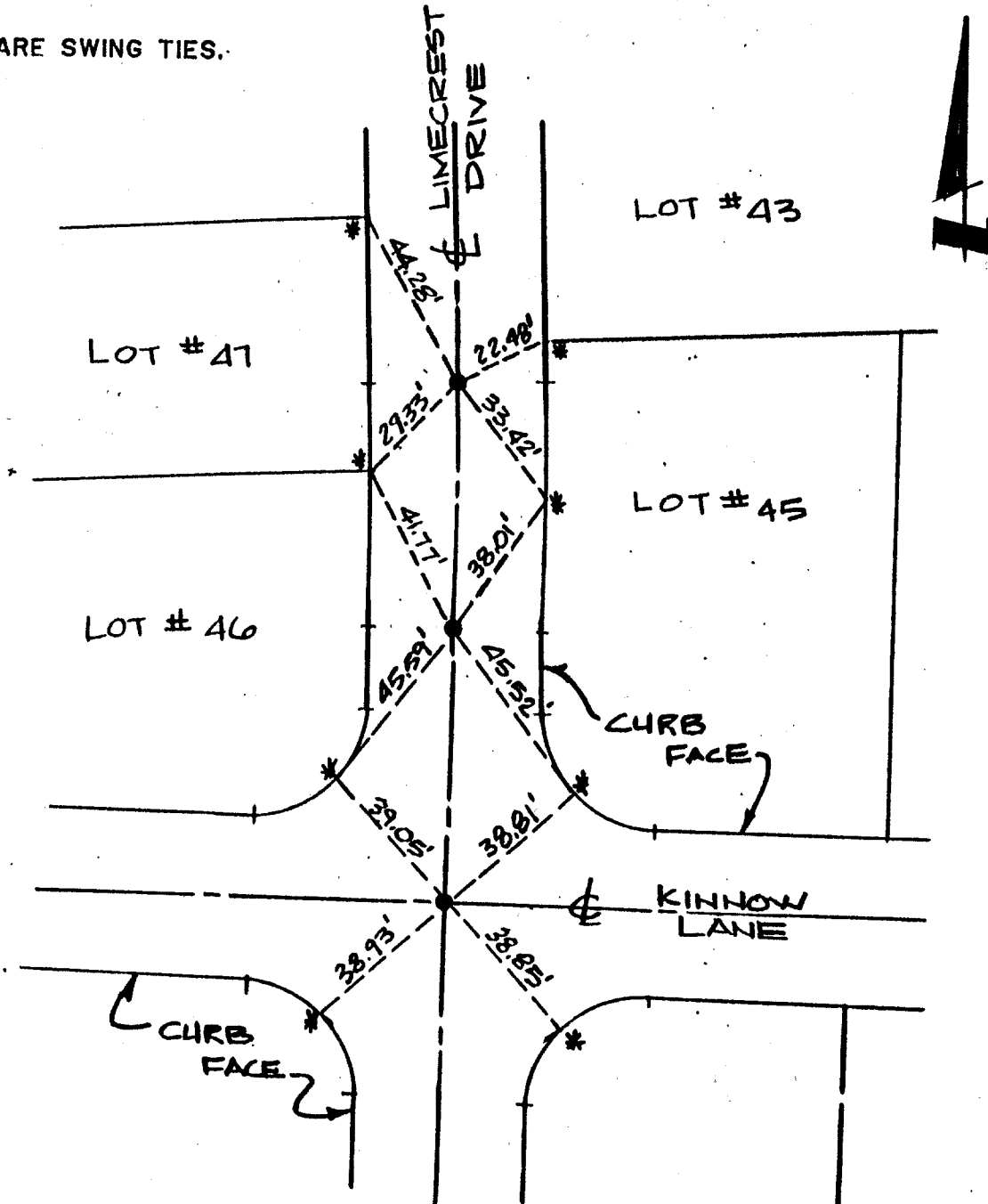


NOTE :
ALL TIES ARE SWING TIES.



* SET RAMSET NAIL IN CURB
 ● SET 1" IRON PIPE, TAGGED LS 5306

× FD. Ramset Nail on T/C ● FD. LD. & TK. on T/C
 ■ FD. "C" Nail on T/C ○ Set LD. & TK. on T/C

Street: KINNOW LANE
 X-Street: LIMECREST DR

OFFICIAL USE ONLY

Scale:
 Date: OCT 1988
 Drawn by:
 W.O.:
 F.B.:

OFFICIAL TIE PLAT
 CITY OF RIVERSIDE

These ties are for the purpose of perpetuating the found monumentation. No claim is made as to the relationship of the points or lines shown hereon to true boundary locations.

TRACT 19958-1
 Sheet 6 of 13
 File No.: