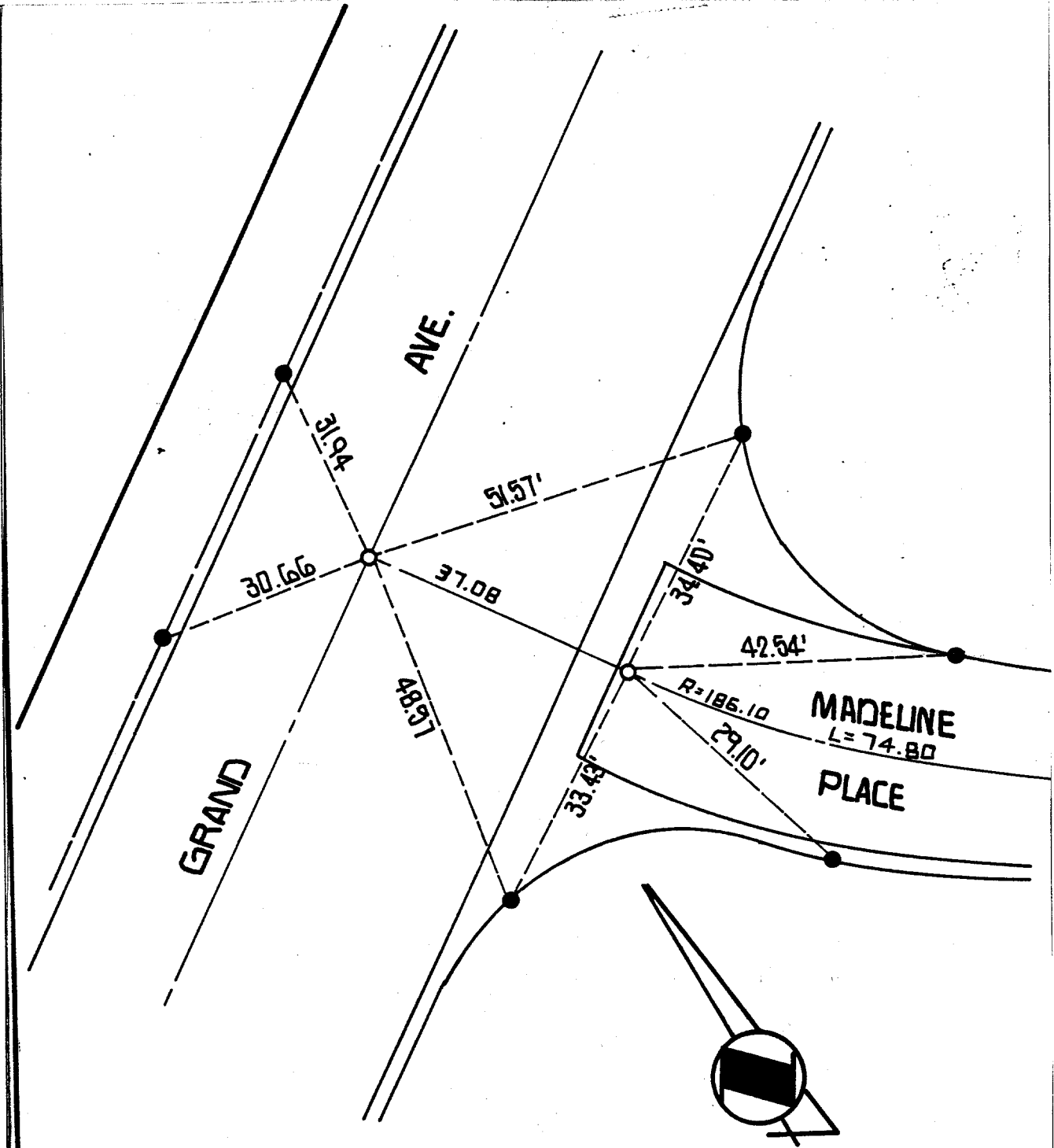


Street: MADELINE PL. X-Street: GRAND AVE  
 OFFICIAL USE ONLY



○ = SET 1" I.P. WITH PLASTIC PLUG RCE 13116, UNLESS OTHERWISE NOTED.  
 ● = SET DRIVE PIN IN TOP OF CURE UNLESS OTHERWISE NOTED.

- × FD. Ramset Nail on T/C
- FD. LD. & TK. on T/C
- FD. "C" Nail on T/C
- Set LD. & TK. on T/C

Scale: 1" = 20'  
 Date: APRIL 26, 1994  
 Drawn by:  
 W.O.:  
 F.B.:

**OFFICIAL TIE PLAT**  
 CITY OF RIVERSIDE

*These ties are for the purpose of perpetuating the found monumentation. No claim is made as to the relationship of the points or lines shown hereon to true boundary locations.*

TRACT 23391  
 Sheet 1 of 4  
 File No.: