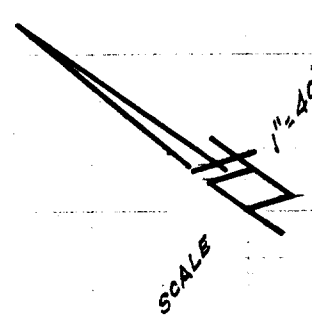
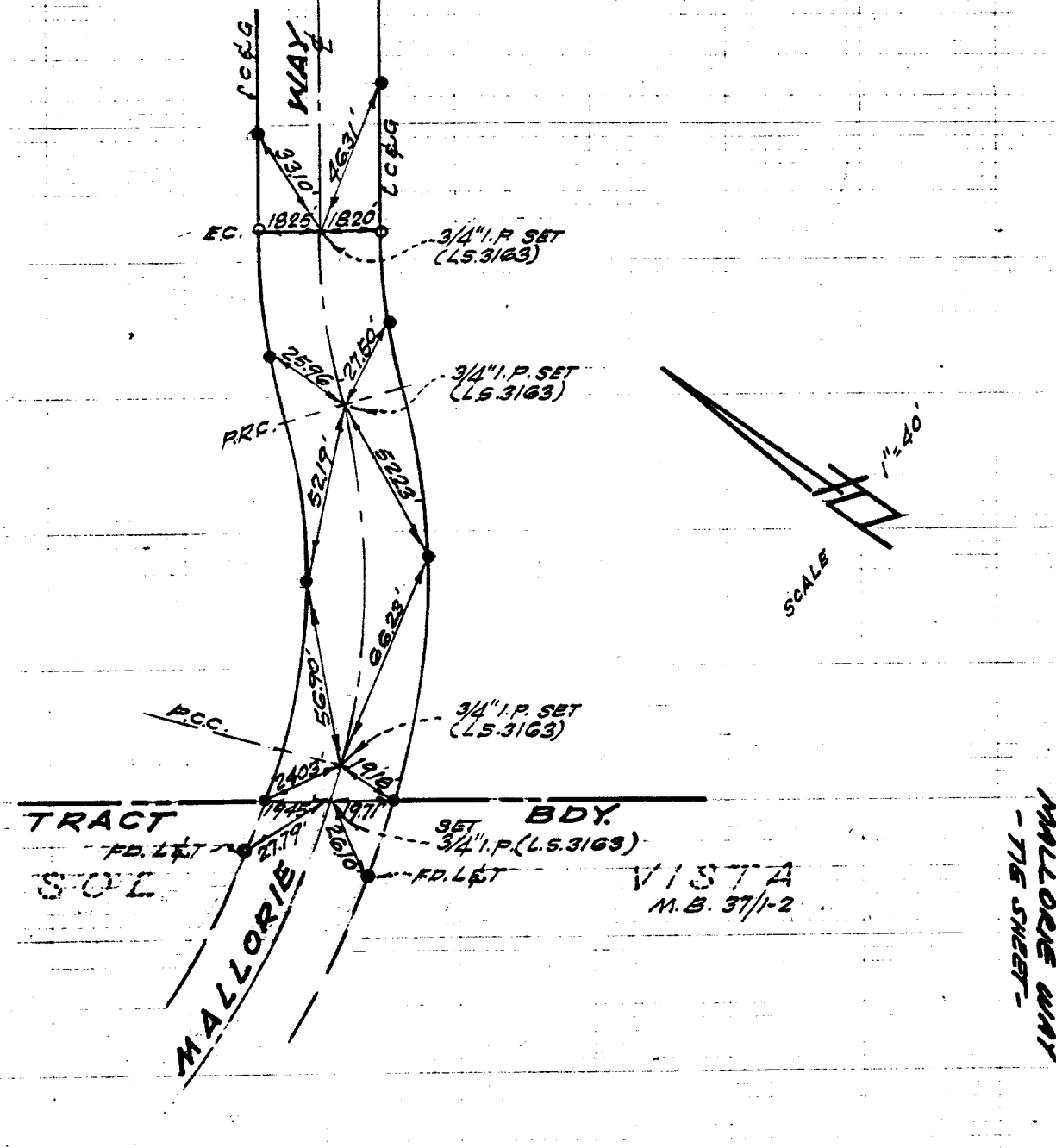


MALLORIE WAY
 S-W/4 OF CHADWICK PL
 ● = SET CONC. NAIL IN T.C.
 ○ = SET NAIL & TAG (L.S. 3/163)
 IN T.C.

SEE SHEET NO. 2



- × FD. Ramset Nail on T/C
- FD. LD. & TK. on T/C
- FD. "C" Nail on T/C
- Set LD. & TK. on T/C

Street: **MALLORIE WAY**
 X-Street: **"TRACT BDY" SOL VISTA**
 OFFICIAL USE ONLY

Scale:
 Date:
 Drawn by:
 W.O.:
 F.B.:

OFFICIAL TIE PLAT
 CITY OF RIVERSIDE

These ties are for the purpose of perpetuating the found monumentation. No claim is made as to the relationship of the points or lines shown hereon to true boundary locations.

Sheet 1 of 1
 File No.: