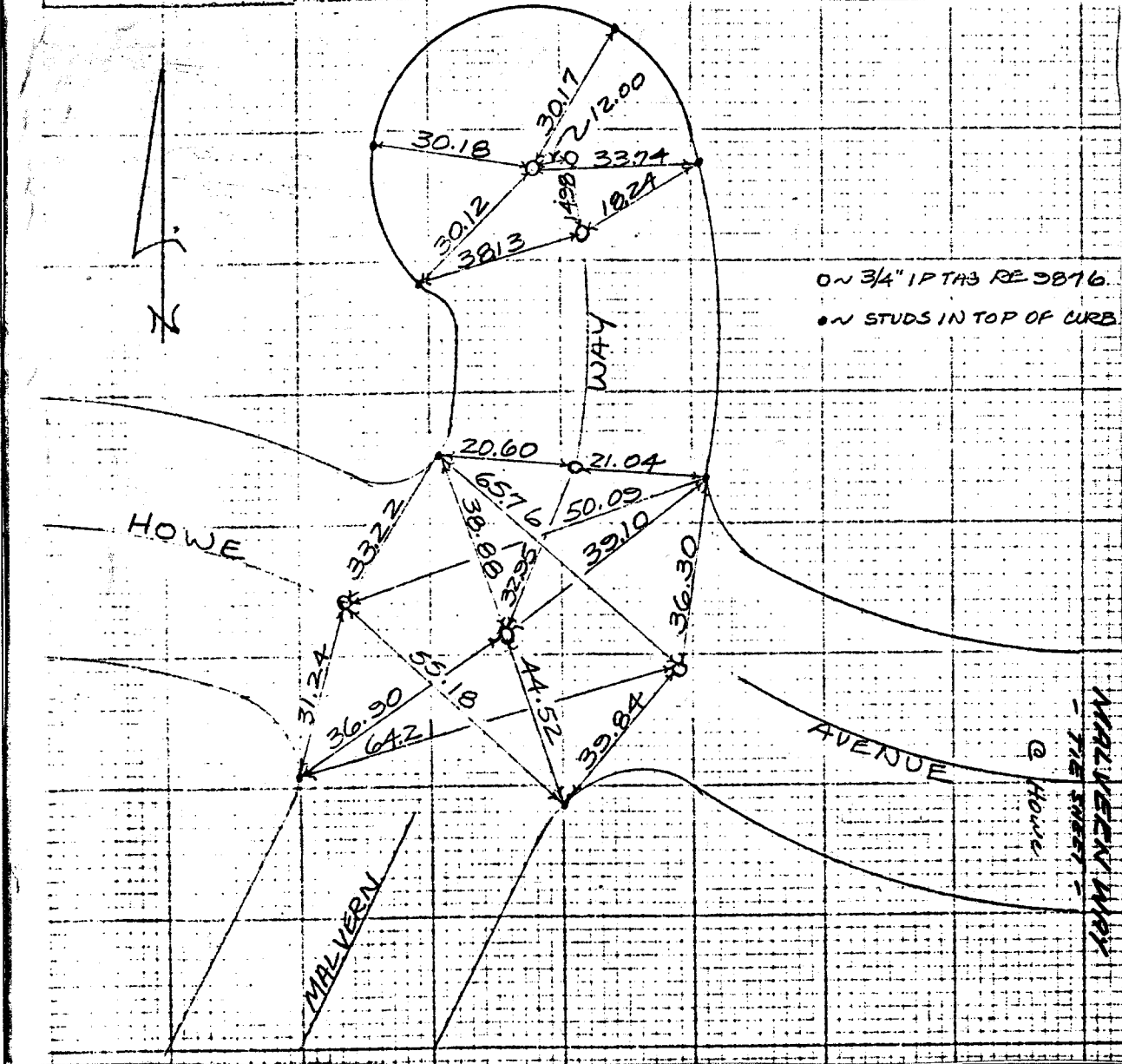


AA. WEBB
 FB. 439 -
 498 -
 549 -

SWING
 TIES

4 MALVERN WAY
 5 MALVERN WAY
 CUL DE SAC
 COPY
 CHECKED
 6-15-69
 JWS JR.



Street: MALVERN WAY
 X-Street: HOWE
 OFFICIAL USE ONLY

- ✕ FD. Ramset Nail on T/C
- FD. LD. & TK. on T/C
- FD. "C" Nail on T/C
- Set LD. & TK. on T/C

Scale:
 Date:
 Drawn by:
 W.O.:
 F.B.:

OFFICIAL TIE PLAT
CITY OF RIVERSIDE

These ties are for the purpose of perpetuating the found monumentation. No claim is made as to the relationship of the points or lines shown hereon to true boundary locations.

Sheet 1 of 1
 File No.: