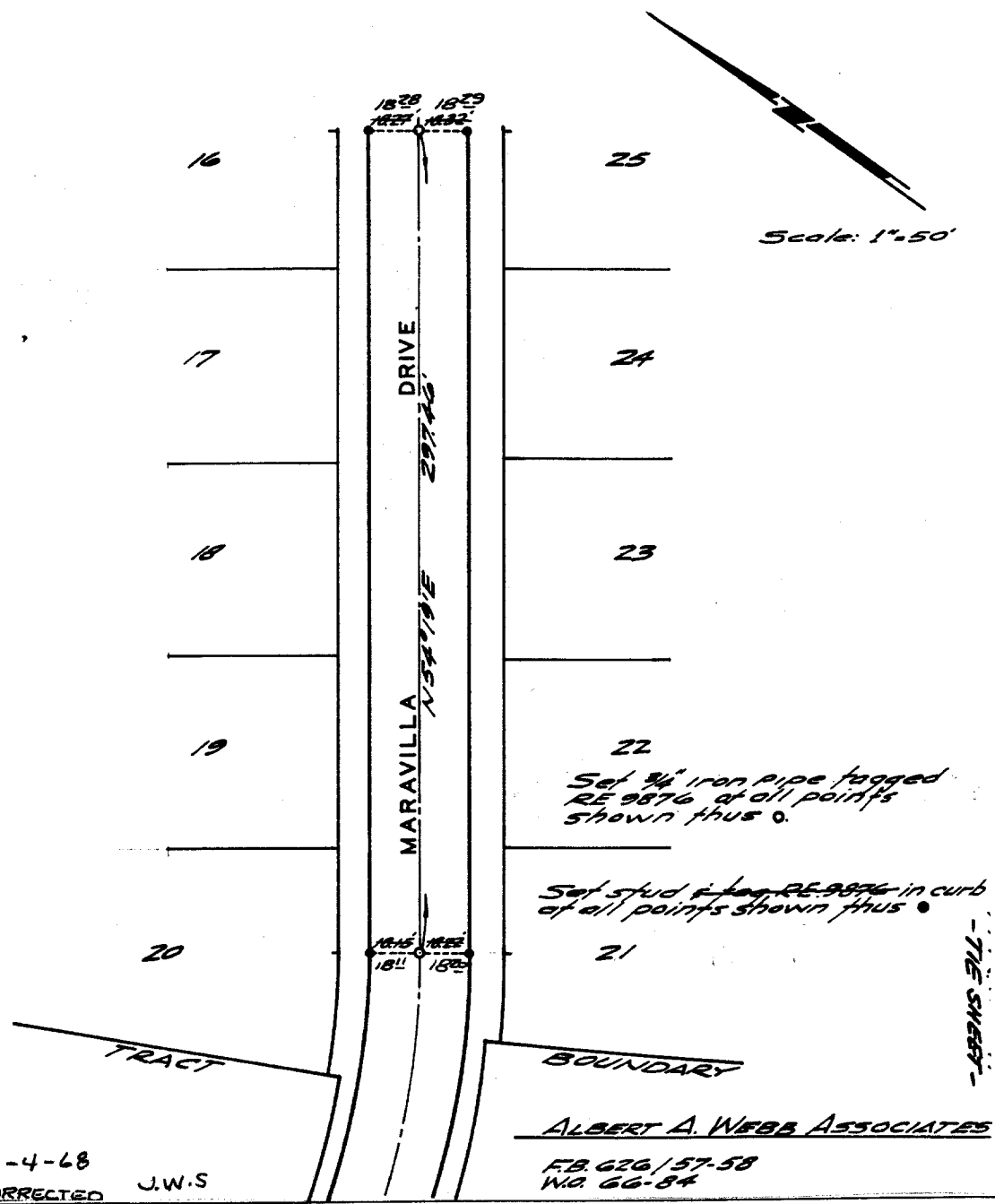


5134.TIF

BEING A SUBDIVISION OF
A PORTION OF THE S.E. 1/4
OF SECTION 20, T.25, R.4W.,
S.B.B. & M.

WLY OF VALENCIA HIL



Street: MARAVILLA DR. WLY X-Street: VALENCIA HILL
OFFICIAL USE ONLY

3-4-68
CORRECTED

J.W.S

ALBERT A. WEBB ASSOCIATES
F.B. 626/57-58
W.O. 66-84

✕ FD. Ramset Nail on T/C
■ FD. "C" Nail on T/C

● FD. LD. & TK. on T/C
○ Set LD. & TK. on T/C

Scale: 1"=50'
Date:
Drawn by:
W.O.: 66-84
F.B.: 626/57-58

OFFICIAL TIE PLAT
CITY OF RIVERSIDE
*These ties are for the purpose of perpetuating the found
monumentation. No claim is made as to the relationship of
the points or lines shown hereon to true boundary locations.*

TRACT 2881
Sheet 3 of 5
File No.: