

5172.TIF

J. F. DAVIDSON ASSOCIATES
CIVIL ENGINEERS • SURVEYORS • PLANNERS

F.B. 85-8953/38

SURVEY OF TIES TO 17271

FOR CONCORDIA

W.O. No. 33-2753 DATE 5-15-86

SURVEY PARTY MARCIA

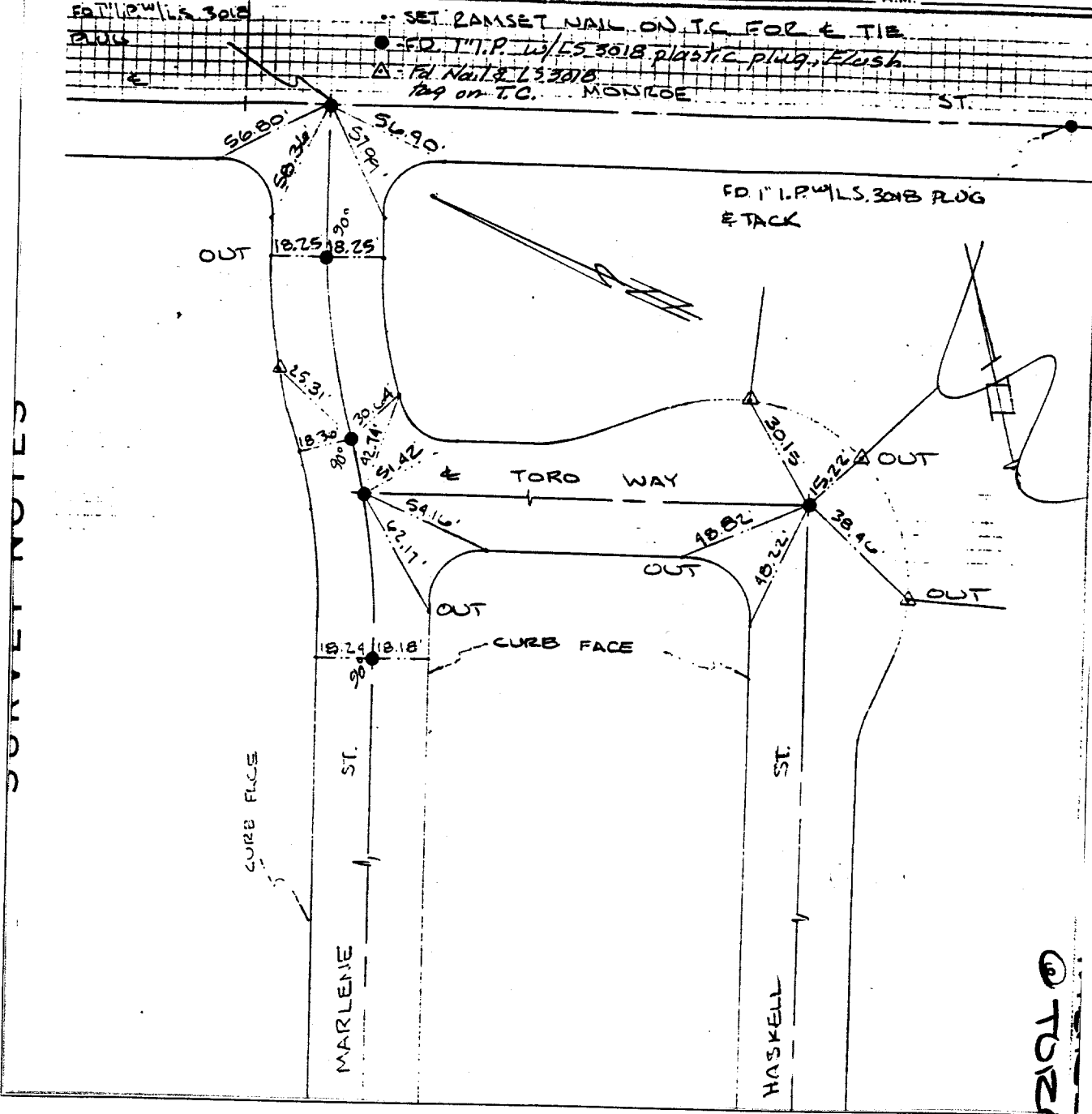
REF. A.M.

FD 1" I.P. W/L.S. 3018
PLUG

• SET RAMSET NAIL ON T/C FOR TIE

● FD 1" I.P. W/L.S. 3018 plastic plug, flush

▲ FD Nail & L.S. 3018
129 on T.C. MONROE ST.



Street: MARLENE ST.

X-Street: TORO WAY
OFFICIAL USE ONLY

- × FD. Ramset Nail on T/C
- FD. "C" Nail on T/C

- FD. LD. & TK. on T/C
- Set LD. & TK. on T/C

Scale:
Date:
Drawn by:
W.O.:
F.B.: 85-895380

OFFICIAL TIE PLAT
CITY OF RIVERSIDE

These ties are for the purpose of perpetuating the found monumentation. No claim is made as to the relationship of the points or lines shown hereon to true boundary locations.

Sheet 1 of 1
File No.: