

Street: MASSACHUSETTS AVE

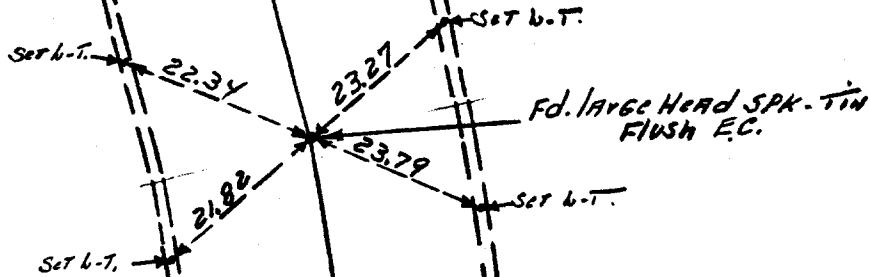
X-Street: FLANDERS

OFFICIAL USE ONLY

MASS. AVE.

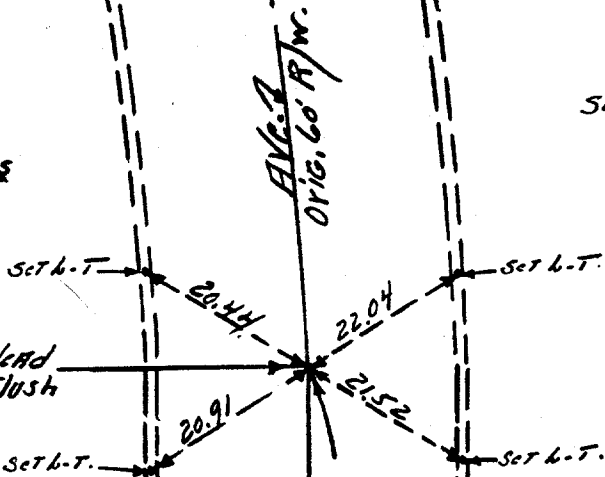
Sheet No-1

(P)



"NOTE"
TRANSIT TIES

1-21-64
See F.B. M-1/8
howry



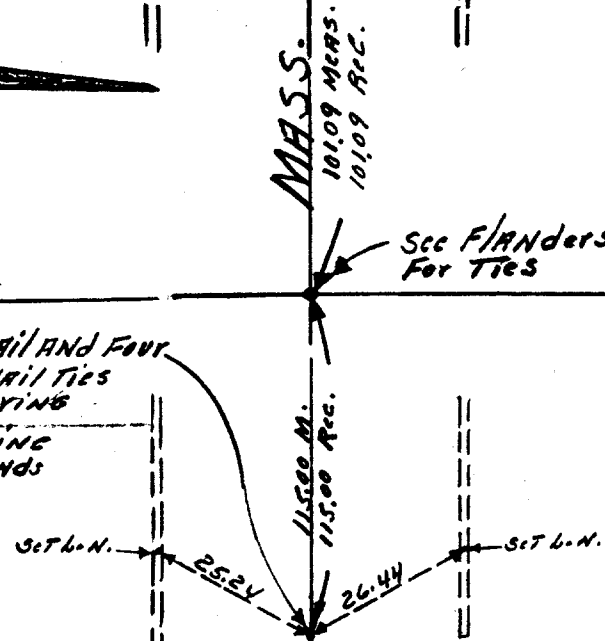
MASS.
10109 MEAS.
10109 REC.

AVE. A
ORIG. 60' R/W.

See Flanders Rd.
For Ties Rd. 2

FLANDERS

Fd. Nail and Four
Nail Ties
on Paving
E/W. Boundary Line
UNIVERSITY HIGHLANDS
UNIT No-1



- × FD. Ramset Nail on T/C
- FD. "C" Nail on T/C

- FD. LD. & TK. on T/C
- Set LD. & TK. on T/C

Scale: _____
 Date: _____
 Drawn by: _____
 W.O.: _____
 F.B.: _____

OFFICIAL TIE PLAT

CITY OF RIVERSIDE

These ties are for the purpose of perpetuating the found
 monumentation. No claim is made as to the relationship of
 the points or lines shown hereon to true boundary locations.

Sheet 1 of 1
 File No.: _____