

5193.TIF

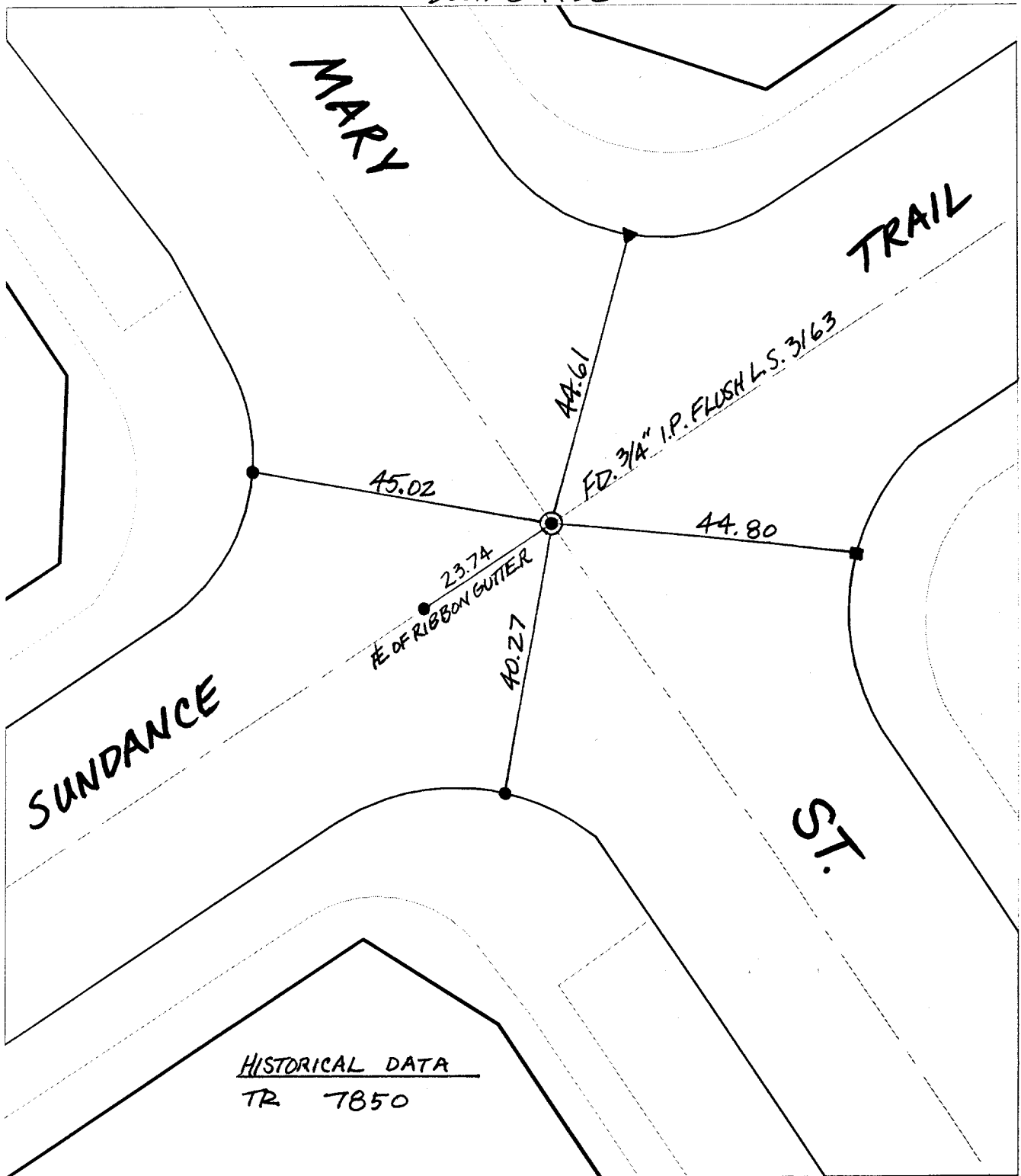
SWING TIES

Street:

MARY STREET

X-Street:  
OFFICIAL USE ONLY

SUNDANCE TRAIL



HISTORICAL DATA  
TR 7850

- ✕ FD. Ramset Nail on T/C
- FD. LD. & TK. on T/C
- FD. "C" Nail on T/C
- Set LD. & TK. on T/C
- P.K. and City Engineer tag to be set @ surface after street construction is complete. (If possible)

Scale: 1" = 20'  
 Date: 10/06/00  
 Drawn by: CURTIERAY  
 W.O.:  
 F.B.:

## OFFICIAL TIE PLAT

### CITY OF RIVERSIDE

*These ties are for the purpose of perpetuating the found monumentation. No claim is made as to the relationship of the points or lines shown hereon to true boundary locations.*



Sheet 1 of 1  
 File No.: